

ZC645



Strategy for a post-industrial landscape

Our project is driven by a strong belief in the city as a collective and shared domain. At the same time the aim is not to overwrite the current condition of the area with a new one, rather adopt it and evolve while gaining new qualities. It is a strategy, an attitude towards the future of the post-industrial landscape, proposing a set of direct spatial principles.

Green Boulevard

On the level of the strategic site our main focus is to address the overall absence of the green in the broader area. Taking advantage of the generous dimensions of the existing Perfektastrasse we turn it into a green boulevard. The Entrée becomes a public park with a pavilion in its southern part.

Productive Villa – Machine (fig. 3)

A set of five new buildings is deployed to offer a wide range of work-spaces of various size, depth and proportions (from micro-units to large scale halls). Additional floors can be added in parts with appropriate height of the ceiling. Flexibility and adaptability is considered of utmost importance.

Productive Villa – Social Condenser (fig. 2)

Together the villas offer a variety of collective and shared spaces (parterre, balconies, logias, corridors, patios, and roof gardens).

Strategy of a Plinth (fig. 1)

The central idea of the spatial organisation is to provide each of the new buildings with a plinth. A typical loading platform thus becomes a podium that serves as a public interface. Pedestrians are elevated from the busy traffic of the ground level where a constant mix of simultaneous and unorganized flows is enacted.

Phasing (fig. 4)

Each building represents a specific spatial potential and performs as an autonomous entity – they work independently while the project becomes stronger and more diverse with every new building.

Parking (fig. 5)

Three of the buildings (B, D, E) maintain parking capacities for the whole area in form of a garage floor partly sunk below the ground. Not all of the spaces have to be necessarily used as a garage. Parts of it could be used as a storage space.

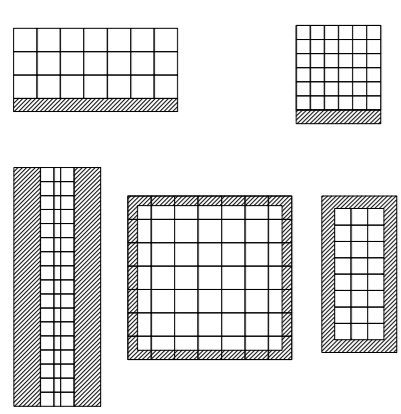


fig. 1

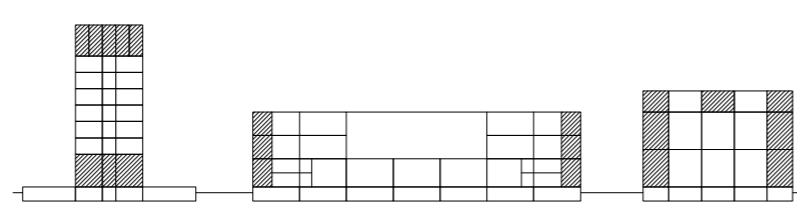


fig. 2

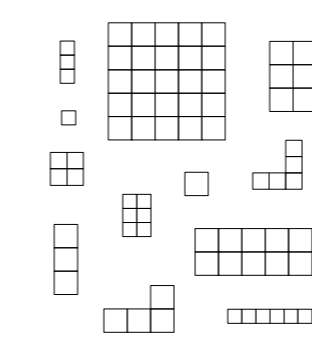


fig. 3

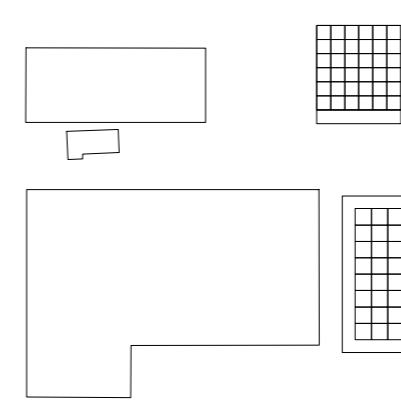


fig. 4

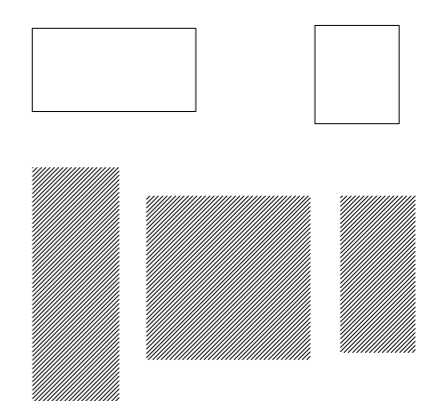


fig. 5

