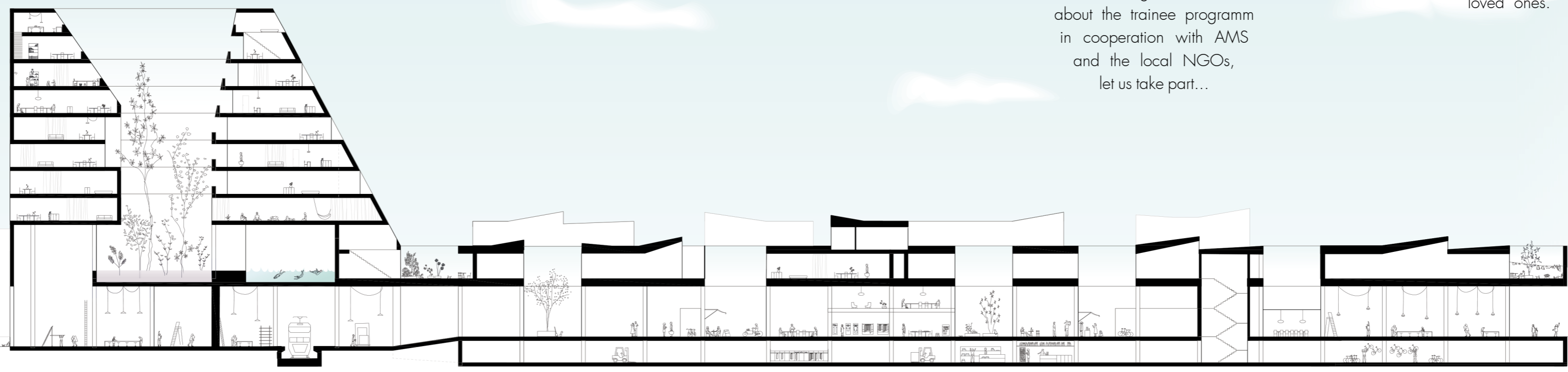


We could meet later on in the tower's garden or at the BBQ factory street 2

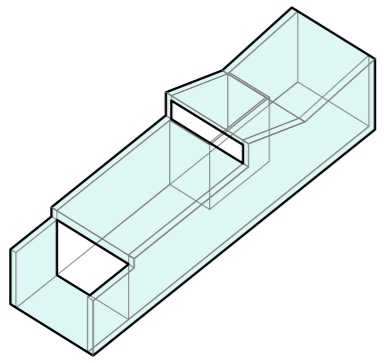
...at five there will be a social innovation hub meeting in the tower about the trainee programm in cooperation with AVMS and the local NGOs, let us take part...

Eventually I found a place to call home, to connect the things which matter to me, I appreciate city life and I do love the countryside, Upper Austria is somewhere inbetween anyways, whenever I have got a couple of hours for free I get on the train to swim in Pichlingersee, to have lunch in Steyr, or to visit the highly underrated city of Wels, every once in a while I work in Vienna, in the evening I am back home in Linz to enjoy a cold beer with my loved ones.

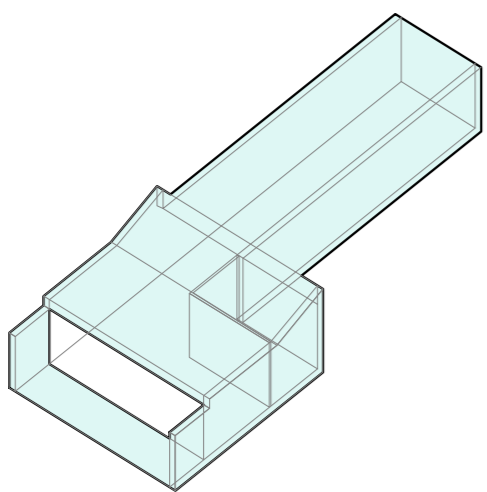


section tower & base scale 1:500

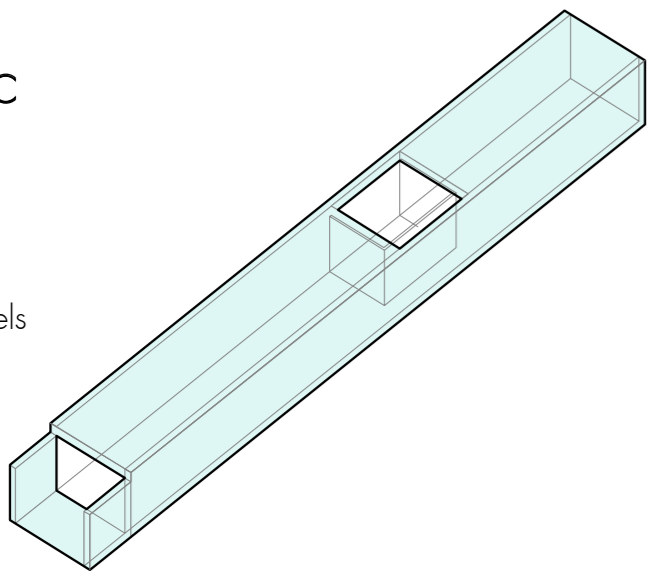
Apartment type A
industrial home, directly connected with the workshop beneath
2 rooms
50 sqm
+10 sqm terrace
appears in two levels
56 units in total



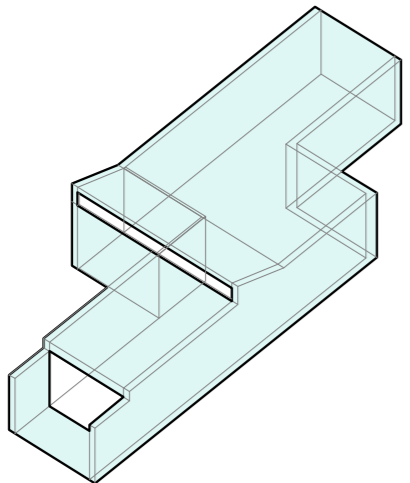
Apartment type B
it is 1 home
4 rooms
stretchable
interchangeable room with type D
approx. 105 sqm
+20 sqm terrace
appears in two levels
24 units in total



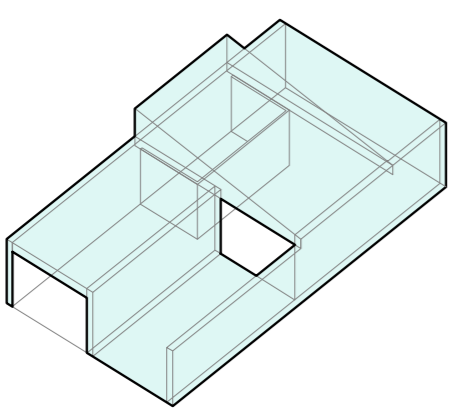
Apartment type C
it is 1 home
4 rooms
115 sqm
+10 sqm terrace
appears in two levels
19 units in total



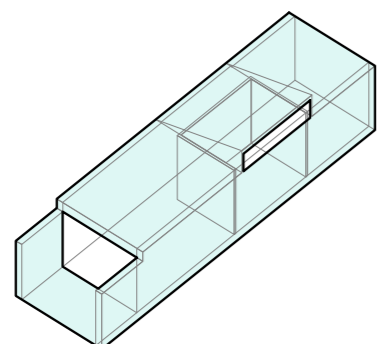
Apartment type D
it is 1 home
4 rooms
stretchable - interchangeable room with type D
approx. 125 sqm
+10 sqm terrace
appears in two levels
17 units in total



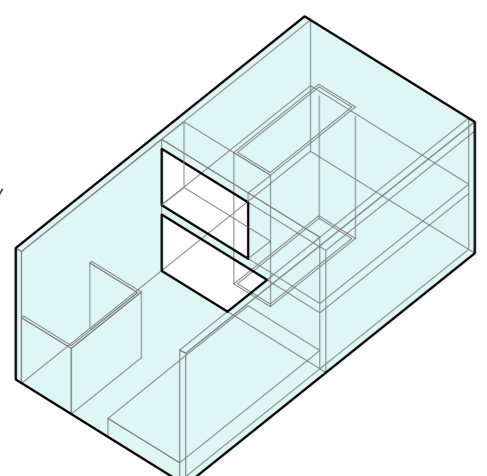
Apartment type E
it is 1 home
4 rooms
95 sqm
+30 sqm terrace
appears in two levels
19 units in total



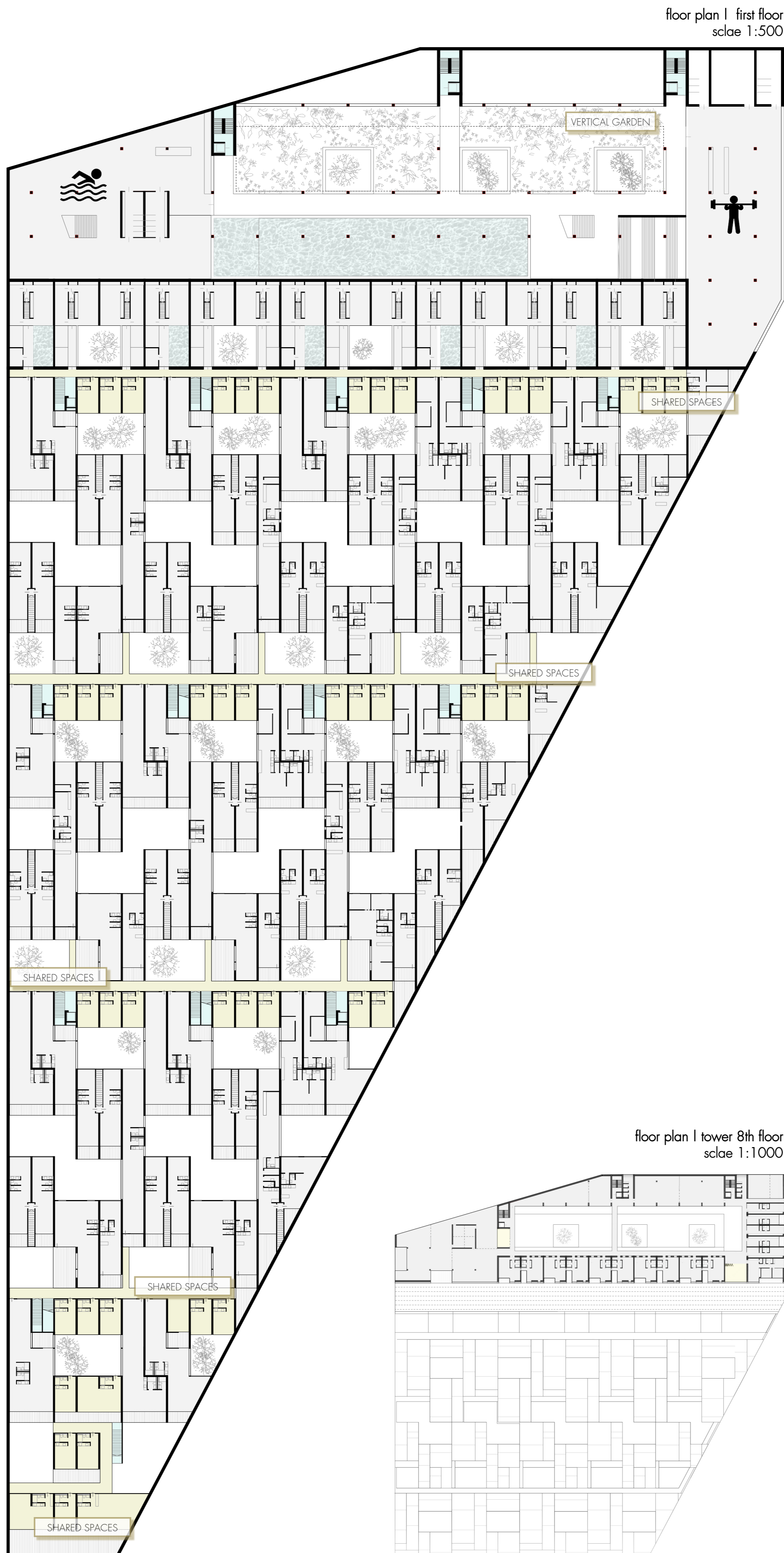
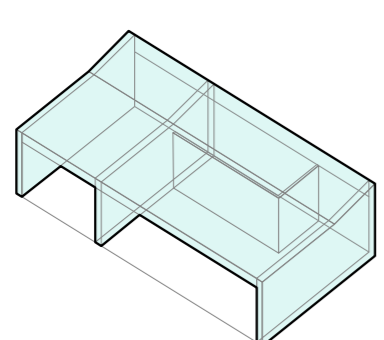
Apartment type F
it is 1 home
3 rooms
80 sqm
+20 sqm terrace
appears only in first level
9 units in total



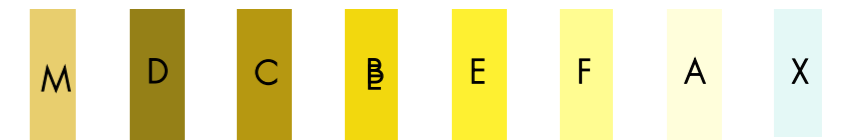
Rooms type M
it is 1 home | one house
4 rooms on two floors
100 sqm
courtyard with or without pool / 30-60sqm
appears only in first level
12 units in total



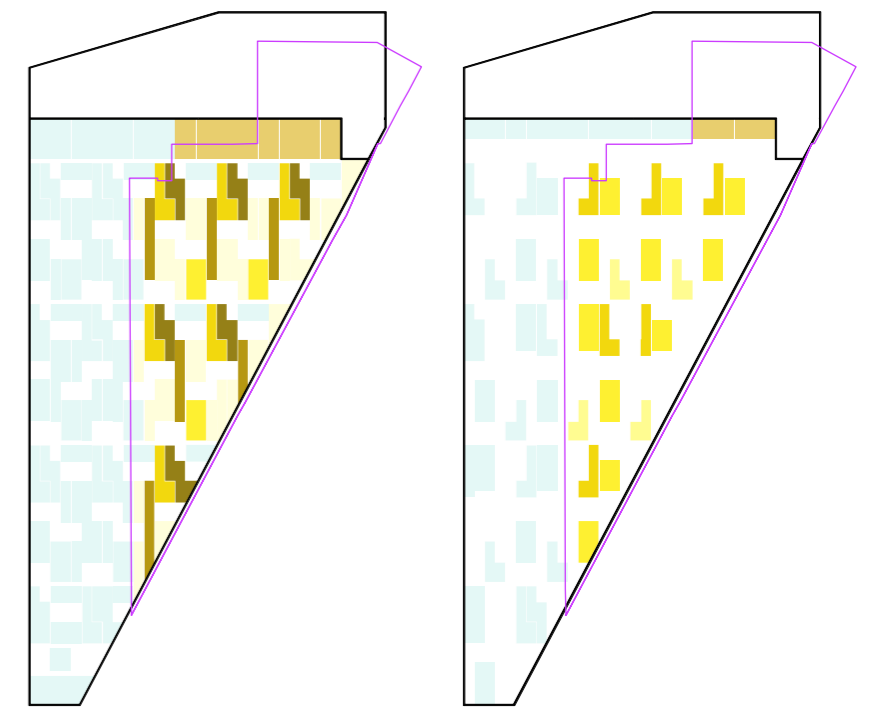
Rooms type X
it is 1 multifunctional space
office, common space, short time apartment....
1-3 rooms
25 sqm x 3
might also be a terrace
appears only in first level
12 units in total



floor plan | first floor scale 1:500



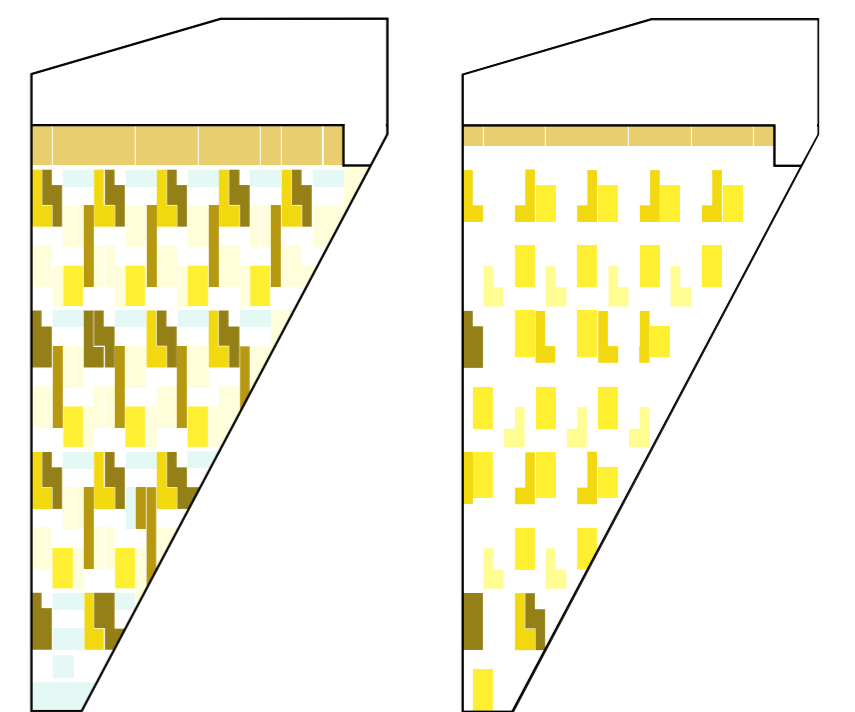
position of different modules village system



first floor housing second floor housing

Housing distribution during phase I & phase II

before the new concept is completely developed its reasonably separated of industrial activity



first floor housing second floor housing

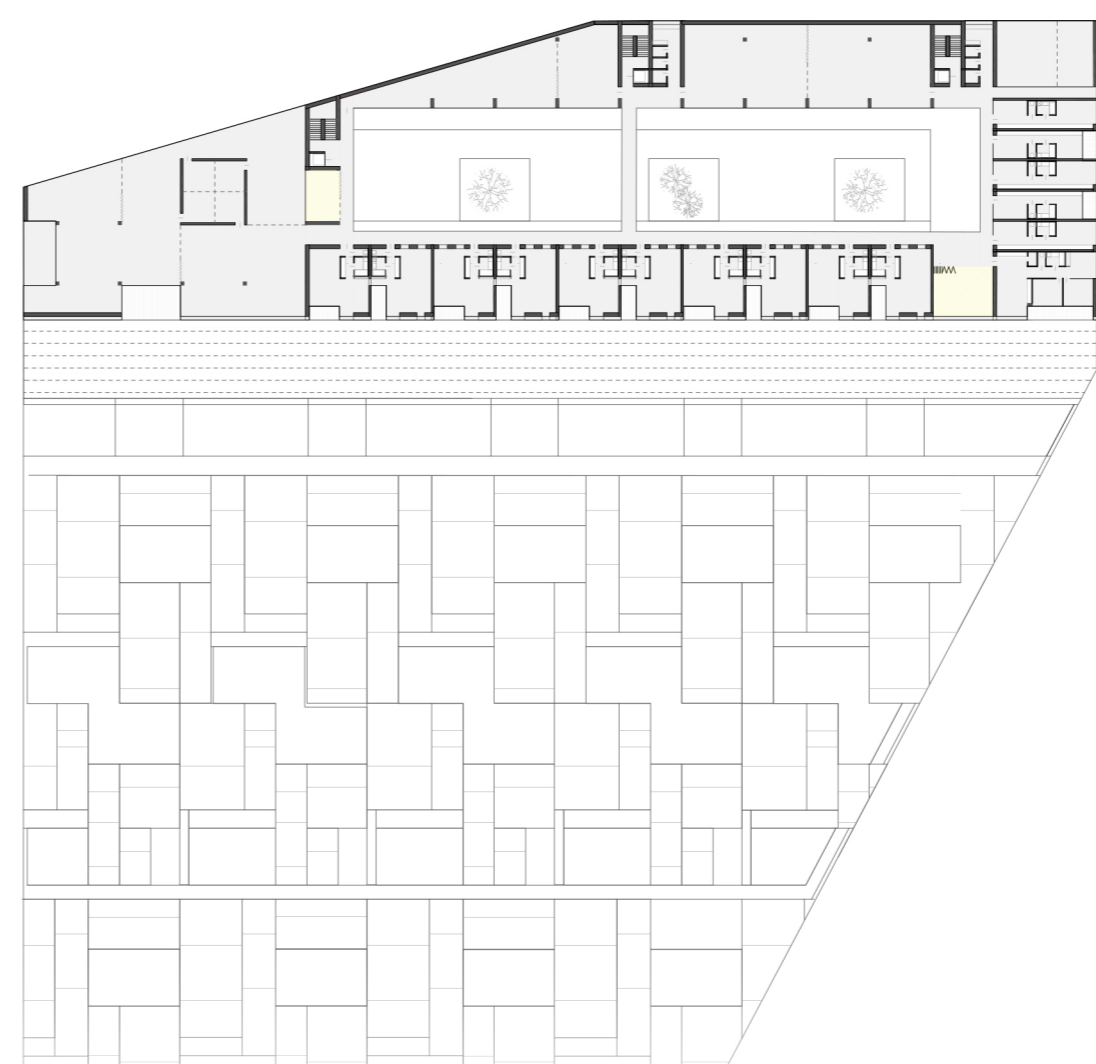
Housing distribution when completed - after phase III

once the intended interplay between housing and industry is settled the area is ready to density and expand

maximal occupation of the plot

plot surface area	36.400 sqm
total constructed surface area	75.000 sqm
density	2.06
living area	38.000 sqm (50%)
production related areas	37.000 sqm (50%)

floor plan | tower 8th floor scale 1:1000



Proximity is (to trainstation... to city centre... to work... to inspiration... to...) is one of the key words within the new districts agenda.

The village system is a complex and dense structure right in the heart of Linz. It allows different situations and spaces for communication. Common pathways are leading to the separate housing or office units, flexible spaces connected to the pathways, providing a framework for change. The structure provides a good mixture of exposed and withdrawn spaces and in general a good mixture of housing types for different needs & diverse characters, a certain number of apartments is dedicated to people who seek for help and are searching for a temporary shelter to start from. Social productivity will change Linz, PROlinz productions unlimited!