

VN900

LINZ

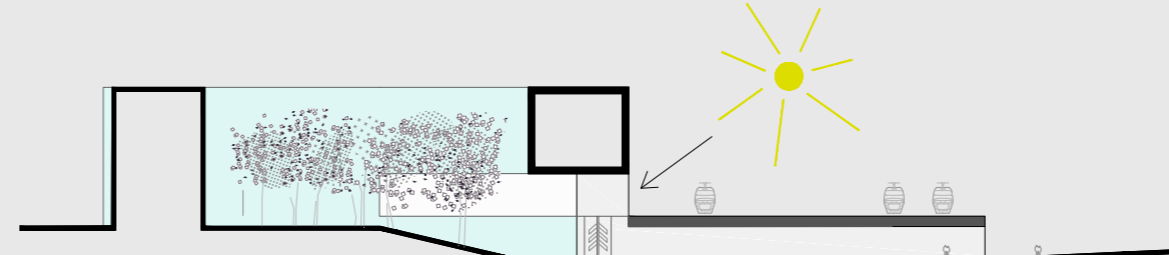
PRO_LINZ PRODUCTIONS UNLIMITED



factory roads
living & working together

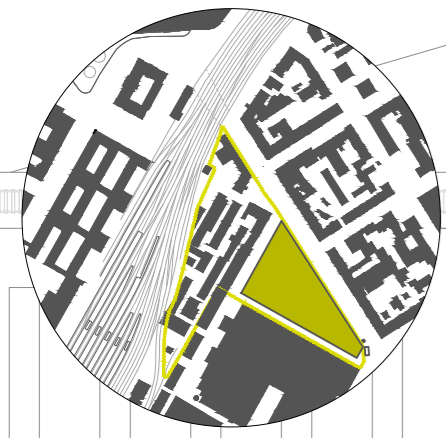
It is a special kind of microcosm here, an adaptable and raw foundation housing productive structures, urban factories, labs and logistic spaces, showrooms with industrial selling. Those spaces are connected by a couple of vivid factory roads, with multilayered usage and common spaces for meetings and activities of all kind. The people are well organized and it is nice to see new projects and products being generated daily. The factory roads are as well the access roads for the two floors above, a cosmopolitan village-like structure is built upon the foundation.

The system allows a high level of transparency and interaction between different functional layers, connected via numerous patios. The ground level is an open urban attractor, different logistic channels are overlapping and create a huge surplus for Linz, improving traffic flow within the city, direct train connection and bike supply reduce the number of needed motorized traffic.

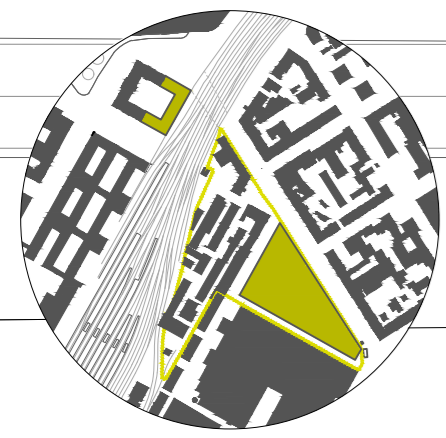


conceptual sketch | section
ÖBB Headquarter future development

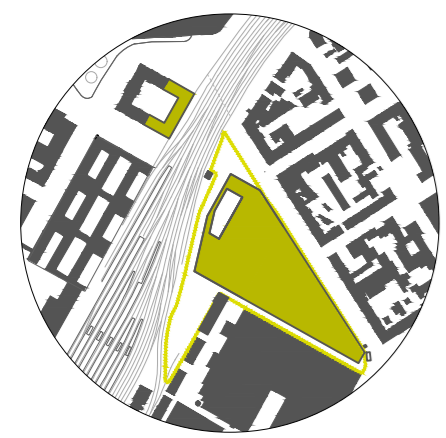
ground floor plan
scale 1:500



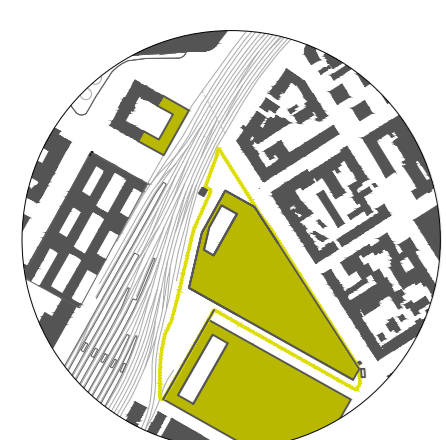
PHASE I
The first phase will work on a focal point in the connection between North and South, the public transport hub at Unikreuzung will be improved by adding the an important part of the productive structure, focusing on the development of the commercial axis towards North. The existing passway to the ÖBB Technical Service will limit the first phase.



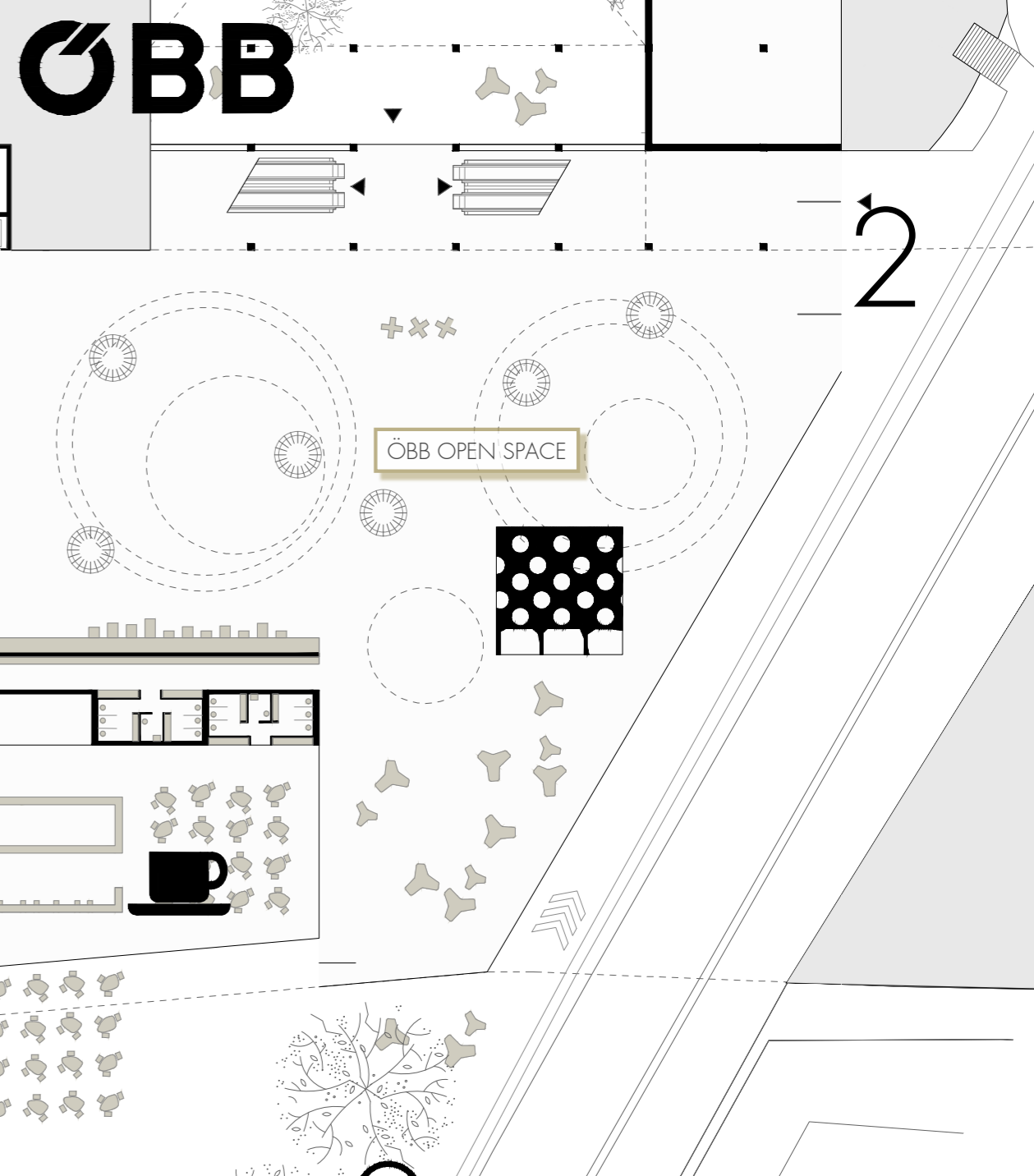
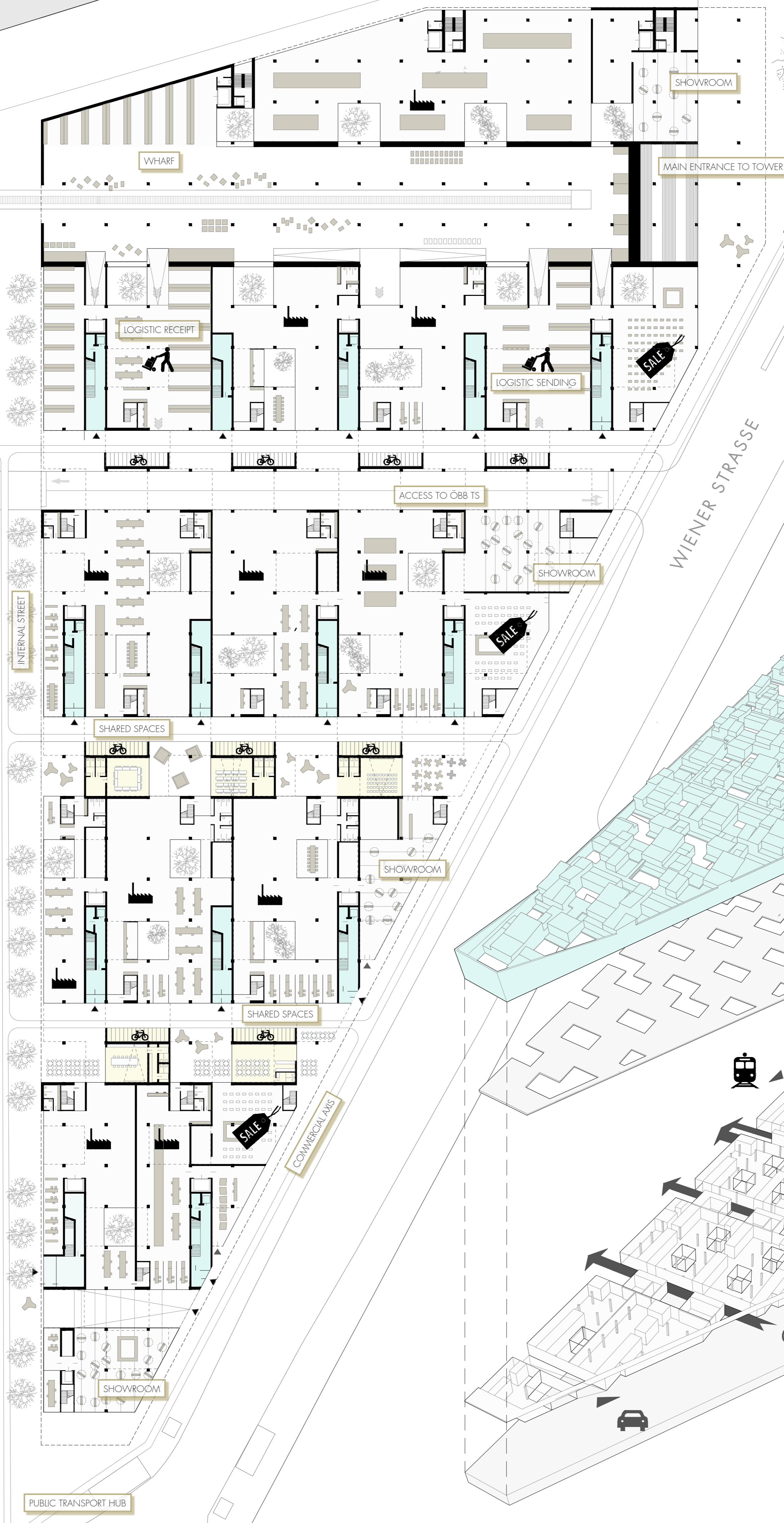
PHASE II
After the successful completion of the first mixed-use structure of phase I, the existing ÖBB building will be transformed into a contemporary and representative Headquarter. The listed parts of the existing building will be kept, the south-eastern wing and the building next to the tracks removed. A volume will be added which shall be clearly visible going down Bahnhofstrasse from the East and which will be the entrance to the Bahnhofsviertel and Wiener Strasse in the South. The main focus will be on solving the faceless appearance of the place at the starting point of Wiener Strasse. In the course of the ÖBB developments in the north the Passage will be realized, visibly starting from the tip of Volksgarten, leading to the Plaza at the entrance of Wiener Strasse.



PHASE III
Phase III three will implement more density facing the railroads. A tower and the adjacent lower structure are put in place to tie to the already working and living system in the South. The new district will work to full capacity, preparing the ground for further expansion to the South West.



PHASE IV
In case of relocation of the ÖBB Technical Service the system could be applied to further expand. The system of tower and base, built up upon a grid can easily be adapted, allowing high flexibility and modularity and the continuation of passages created in phases III.



all studied in this city, but at a certain point went separate ways, mostly Love tore us apart, I live in Munich now, Petr went back to Prague, the others either went to Salzburg or Vienna, only Amra stayed, I guess whatever comes our way, Linz will remain our median. We are best when working together, about twice a year we meet up in PROlinz, rent a couple of small apartments on a temporary basis, share a common kitchen and one of the open work spaces. The days in Linz tend to be intense, sometimes we work the whole night through in Room Number 4020 with a view on the arriving trains, the next day some stay in bed while the others are going to the pool or just spend time in one of the little factory streets to watch things taking form. In the end the productive force of this new district always drags us in.

the vegetable delivering service at PROlinz is currently hiring new people for bike distribution, I might apply...one of the best things which was thought out and implemented in the course of the development is the restructuring of the city's bicycle routes, something which definitely was overdue...

...you might call it fusion baking, somewhere in between Strudel and Börek, we are really doing well and deliver our goods to many places all around Linz, Annes famous tarte au citron already made it to nearly every little upper austrian one-horse townwe even joined Genusland Oberösterreich, this upper austrian umbrella brand name thing to promote regional high quality food. You can find one of their showrooms in factory road 1, connected to it there is a restaurant which is quite good, you should try...

high density tower
housing, business, co-working, industry, public use

low density village structure
industry-related businesses
co-working, housing

transparency and interaction
between the functional layers

production & distribution
different distribution channels
direct via industrial selling & showrooms
local bike delivery
and far away via rail system

urban attractor

industrial and
urban storage (parking)