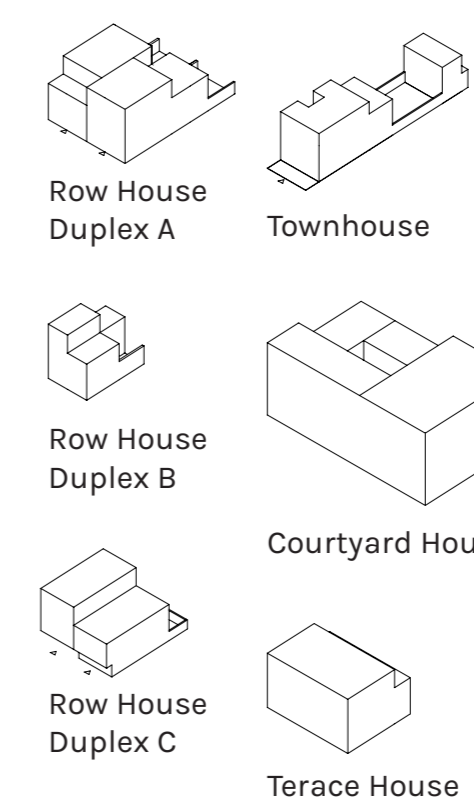
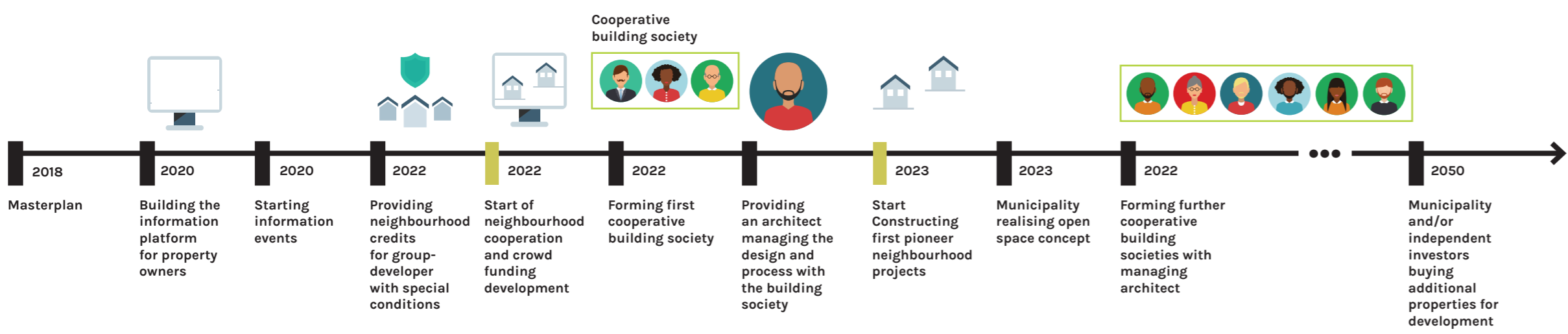
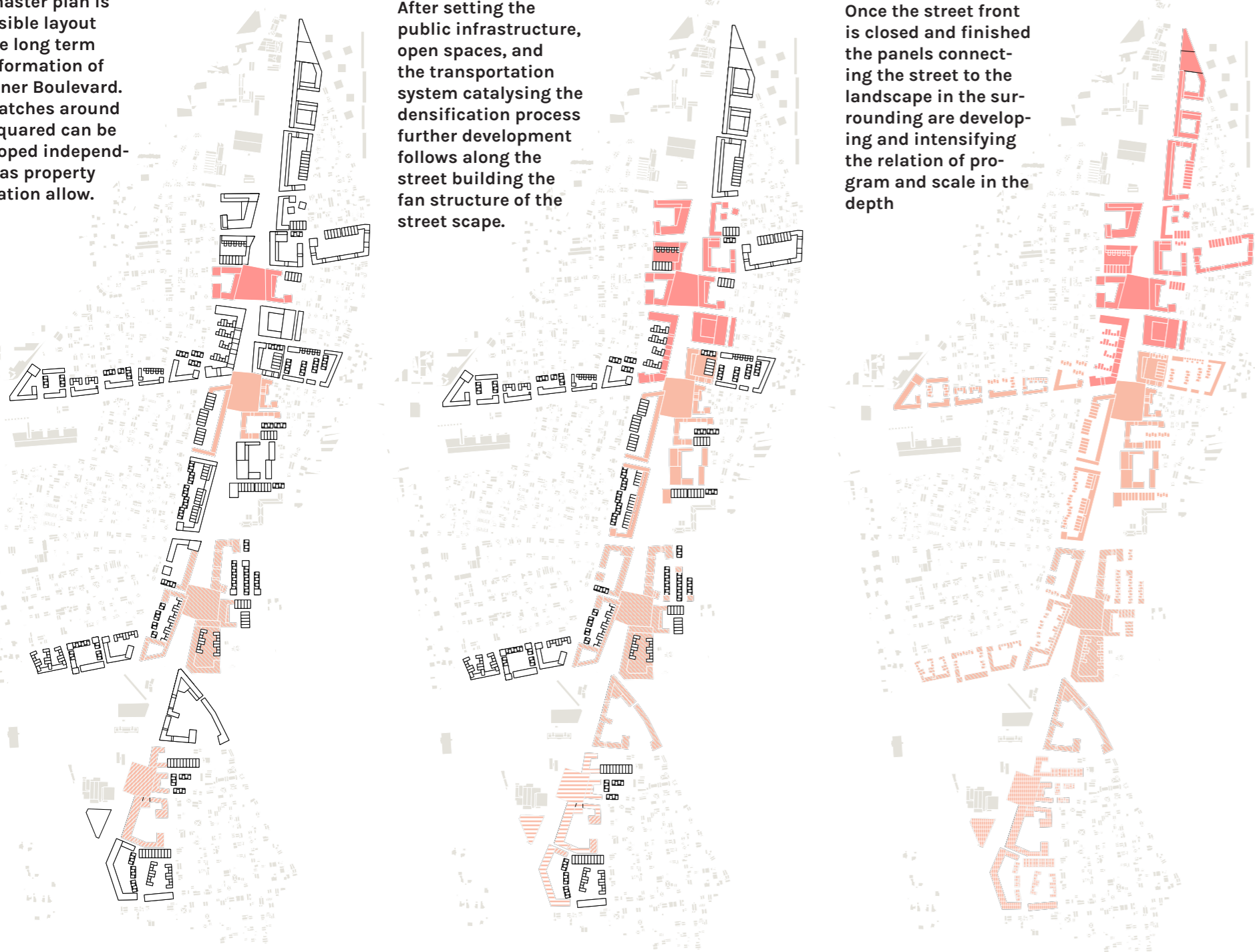


Detail of Pilot Square  
Open Space Design  
and Program 1:500

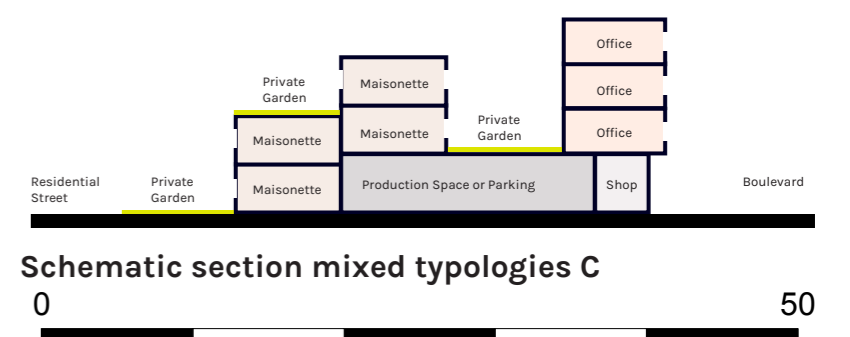
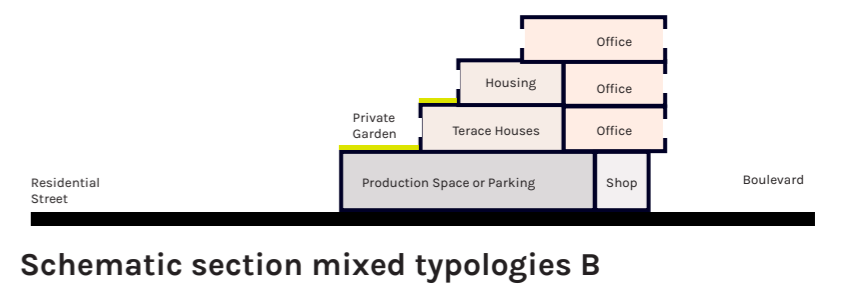
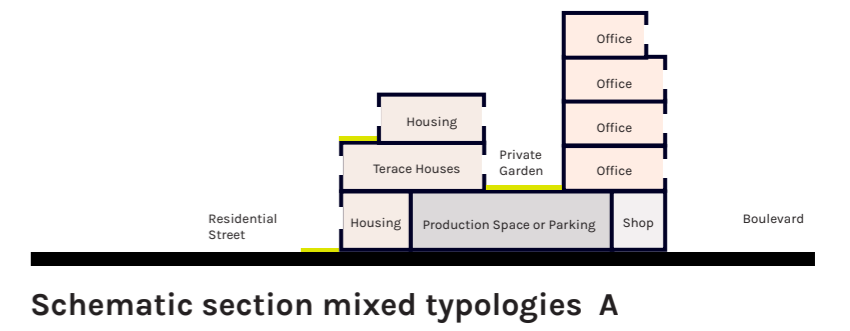
The master plan is a possible layout for the long term transformation of Kärntner Boulevard. The patches around the Squared can be developed independently as property regulation allow.

After setting the public infrastructure, open spaces, and the transportation system catalysing the densification process further development follows along the street building the fan structure of the street scape.

Once the street front is closed and finished the panels connecting the street to the landscape in the surrounding are developing and intensifying the relation of program and scale in the depth



Catalogue of possible housing typologies mediating between street front and residential area



Small scale housing mediating between street front and residential area in the back

