

MJ276

PUBLIC SPACE ACTIVITIES-TACTICS

1 Wienerplatz

Public space

Spaces that can host different forms of spontaneous and informal practices

2 Tactical space

Spaces dedicated to open air relax for workers and citizens

3 Pausgärten

Platform connected to the groundfloor

4 Activity deck

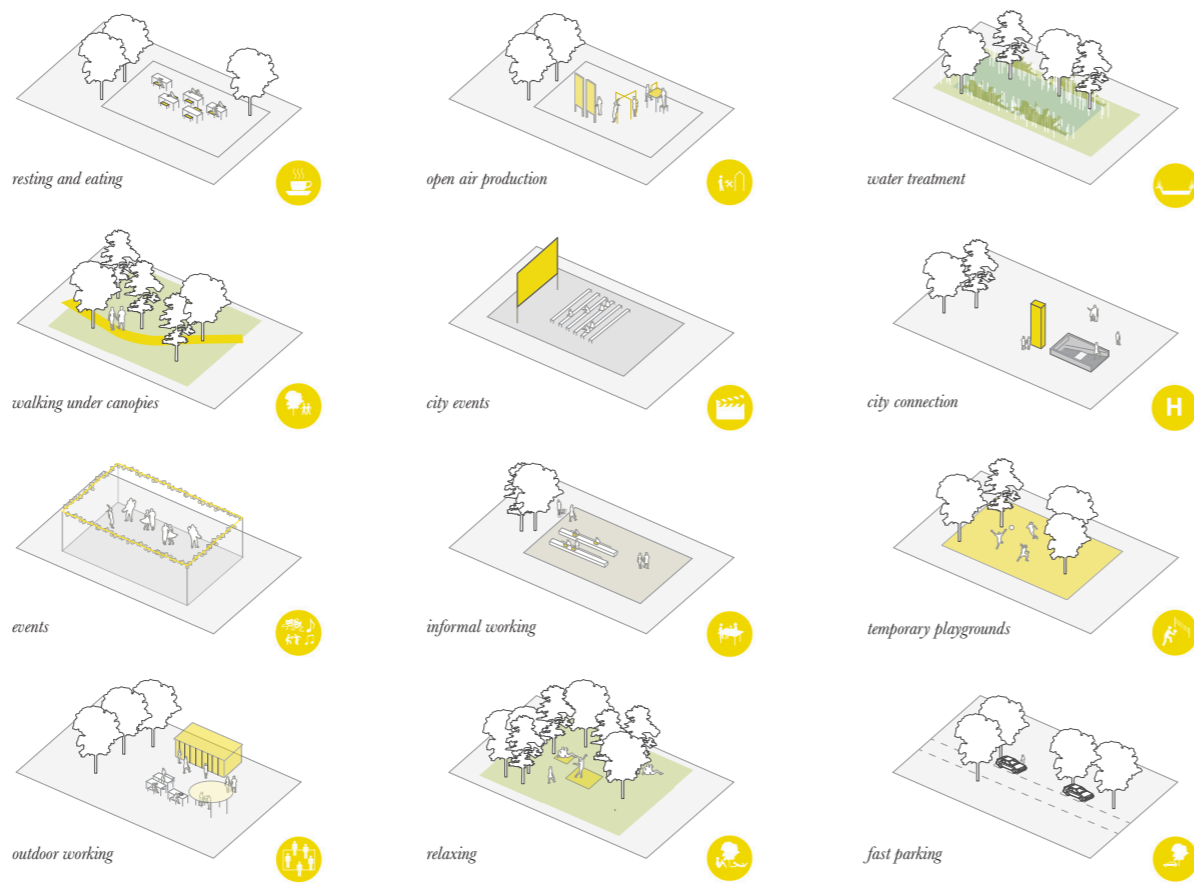
Areas for short period stops along the main streets

5 Filter garden

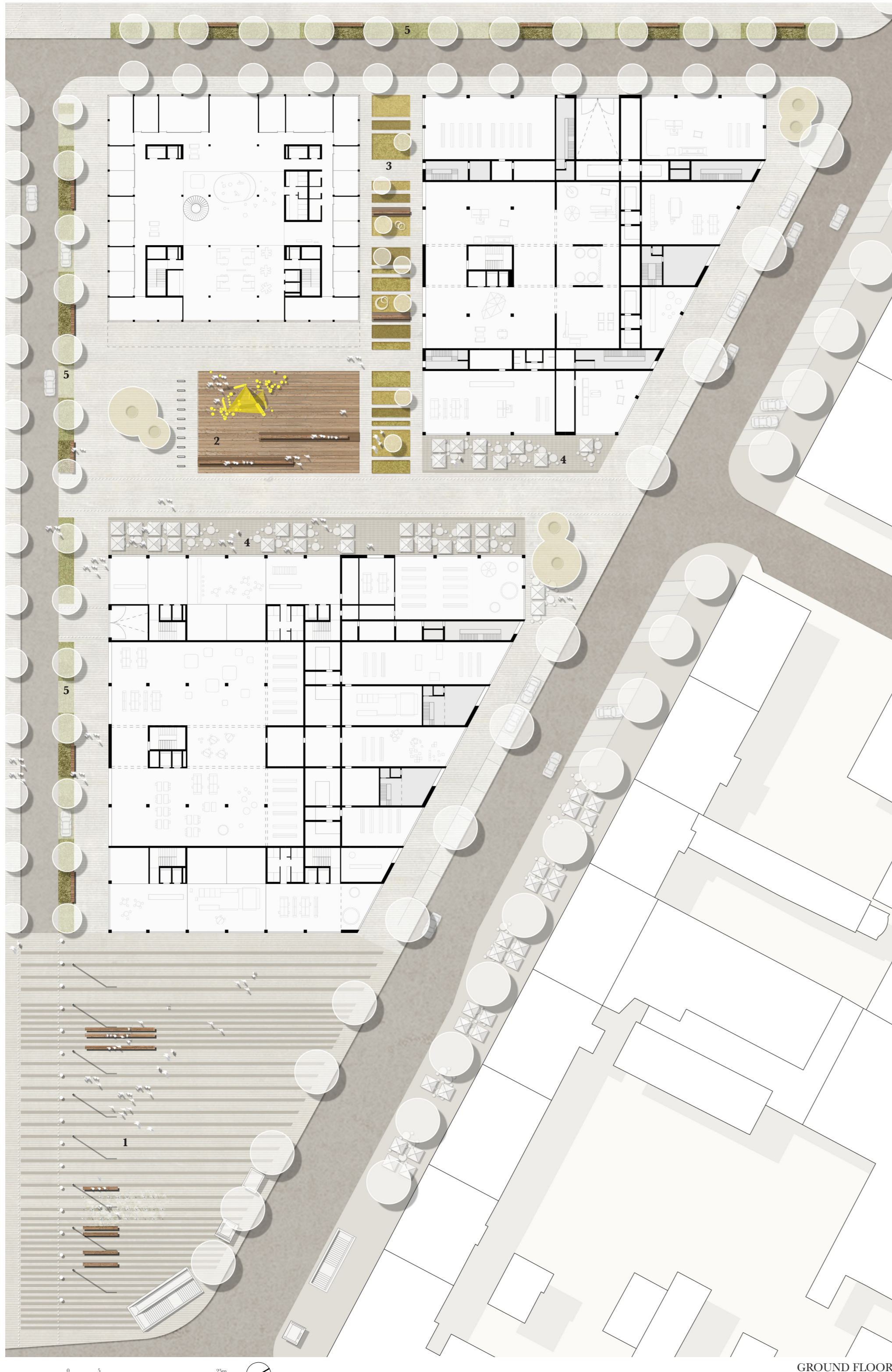
Collective spaces connected with the apartments and the working spaces

6 Housing garden - Productive courtyards

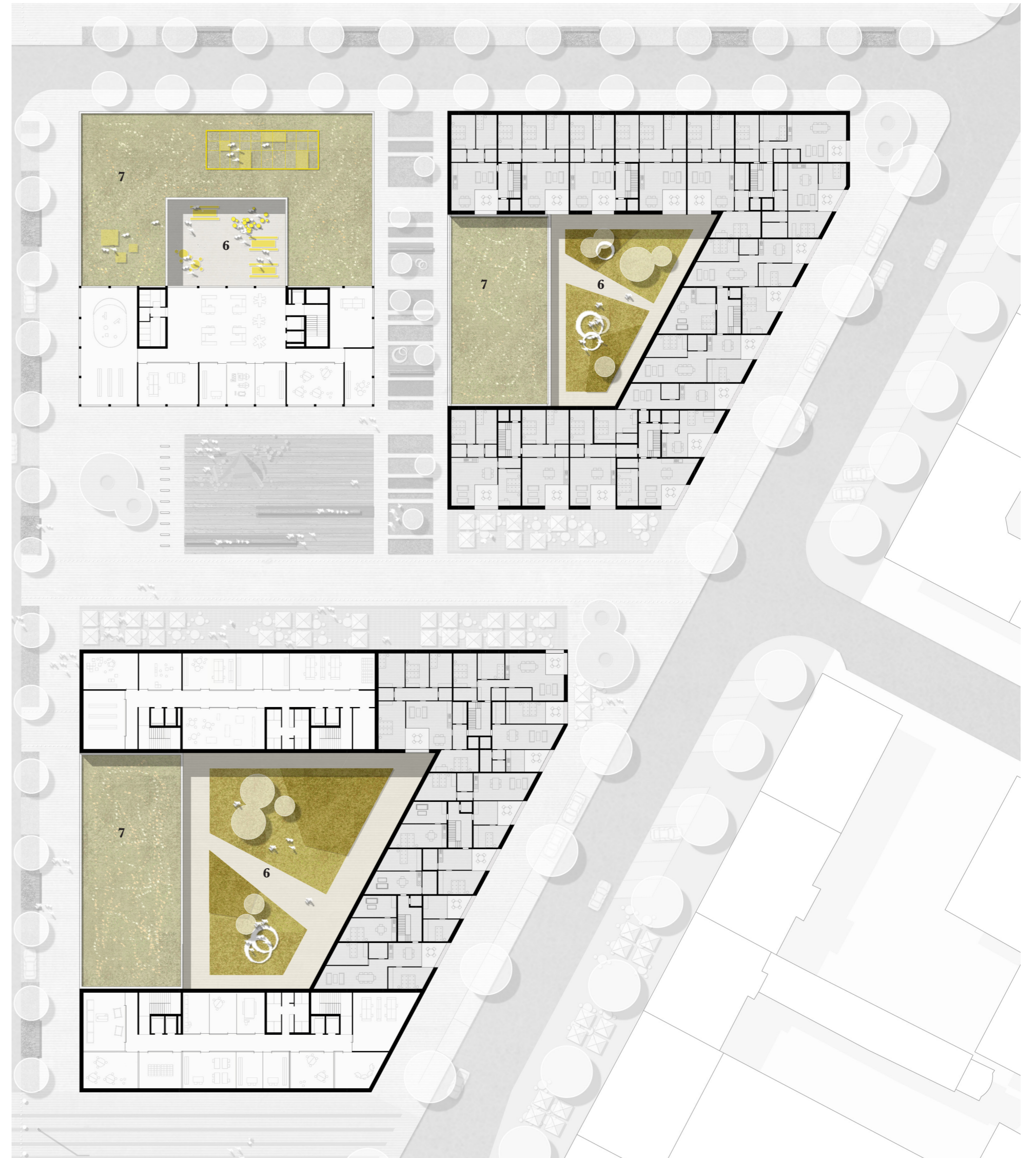
7 Green roof



Relation between building articulation and public space along Wienerstrasse

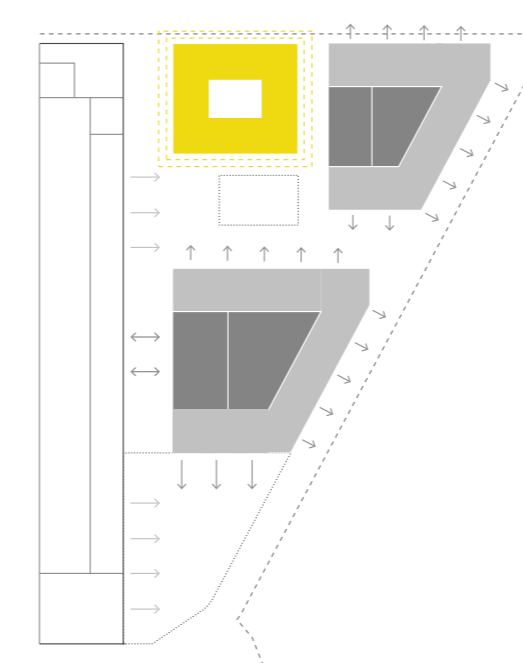


GROUND FLOOR



TYPICAL FLOOR

ACTIVATION OF THE PUBLIC SPACE



PROGRAM

The point of departure of the southern zone project is the definition of "Wienerplatz", a new large square along Wienerstrasse, that function as entrance of the neighborhood. The square influences the programmatic definition of the surrounding buildings that will benefit from this vast public space. The ground floor of the buildings along Wienerstrasse, following the existing character of the street, is dedicated to retail, facilities, cafes and restaurants. The covered inner courtyards are instead large flexible spaces dedicated to commerce, co-working, workshops and start-up incubators. The **techno-hub**, positioned in the core of the southern zone, contains different declination of Industry 4.0: smart production, smart service and smart energy. The complex program, hosted in one single building, will create a scalar economy attracting capitals and expertise. The upper floors are dedicated to more traditional offices for different scale companies and to different housing typologies: living and working studios, co-housing. Thanks to the volumetric articulation, many houses can enjoy both shared and private terraces.

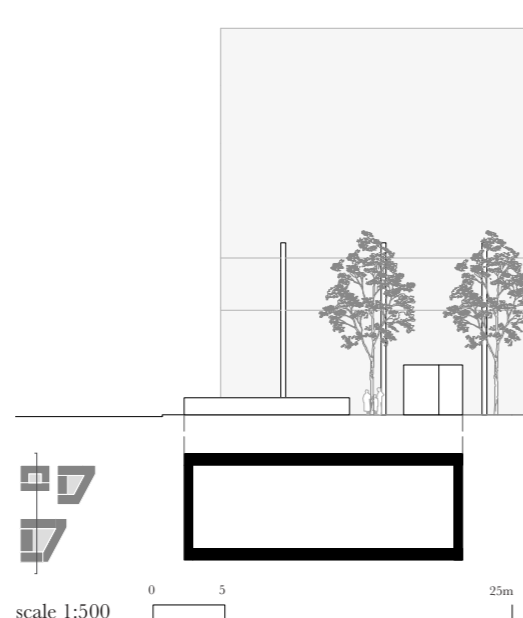
	Housing
	A_3.700 m ² (50 apt.)
	B_6.050 m ² (80 apt.)
	Public space activators
	A_2.200m ²
	B_1.200m ²
	Productive space
	A_2.700m ²
	B_1.550m ²
	Tecno-Hub
	8.000 m ²
	Parking
	A_1.275m ²
	B_4.500m ²
	C_2.310m ²
	Bike Parking
	300 units (1 for each inh.)



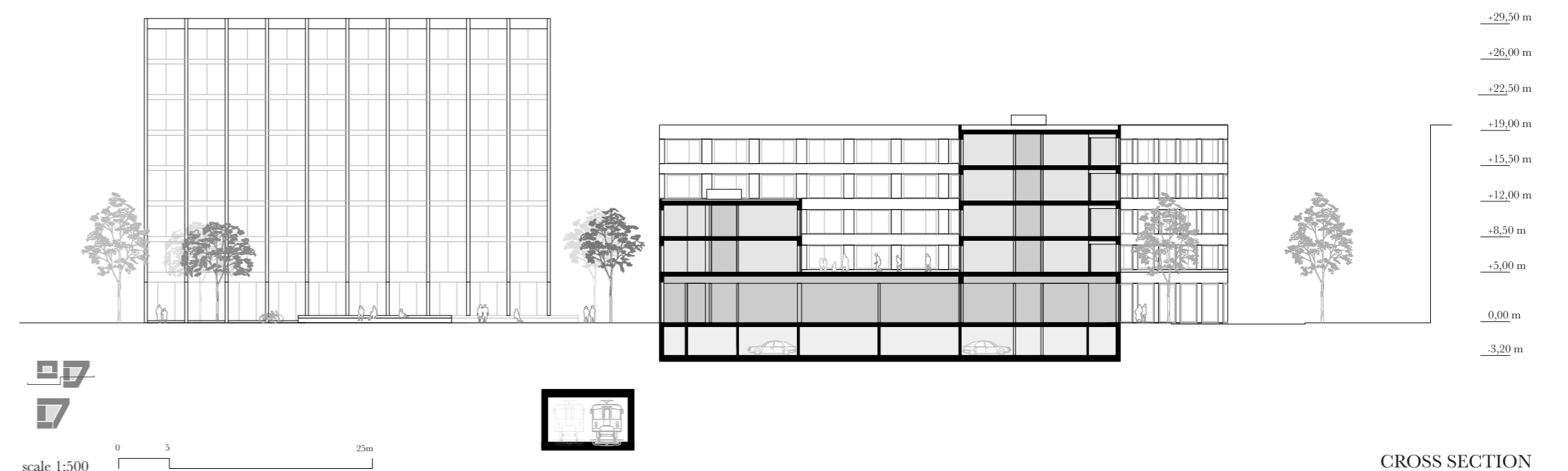
Wienerplatz

THE ADAPTIVE SQUARE

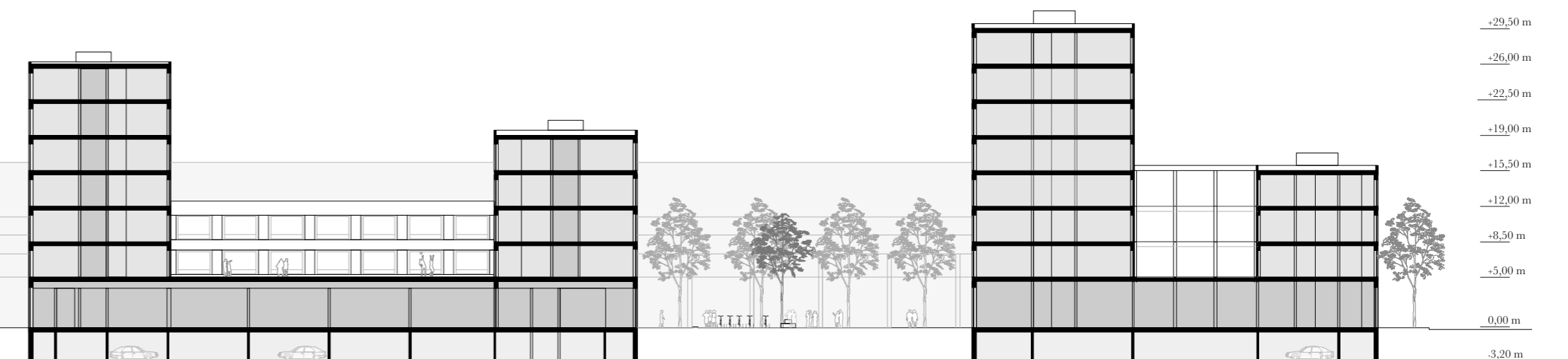
The new Wienerplatz is thought as a **multifunctional gathering point** designed to accommodate a wide variety of activities on the 2.500 m² wide space. The square is a place for the citizens to experience different activities. This dynamic space is created both for the big events and for the small everyday activities as open invitation for urban life.



scale 1:500



CROSS SECTION



LONG SECTION