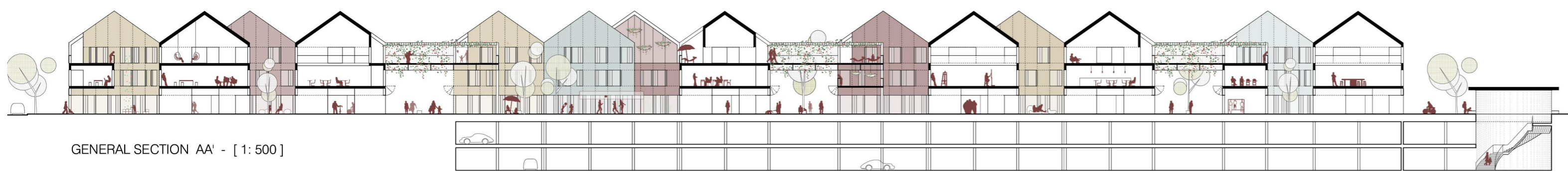


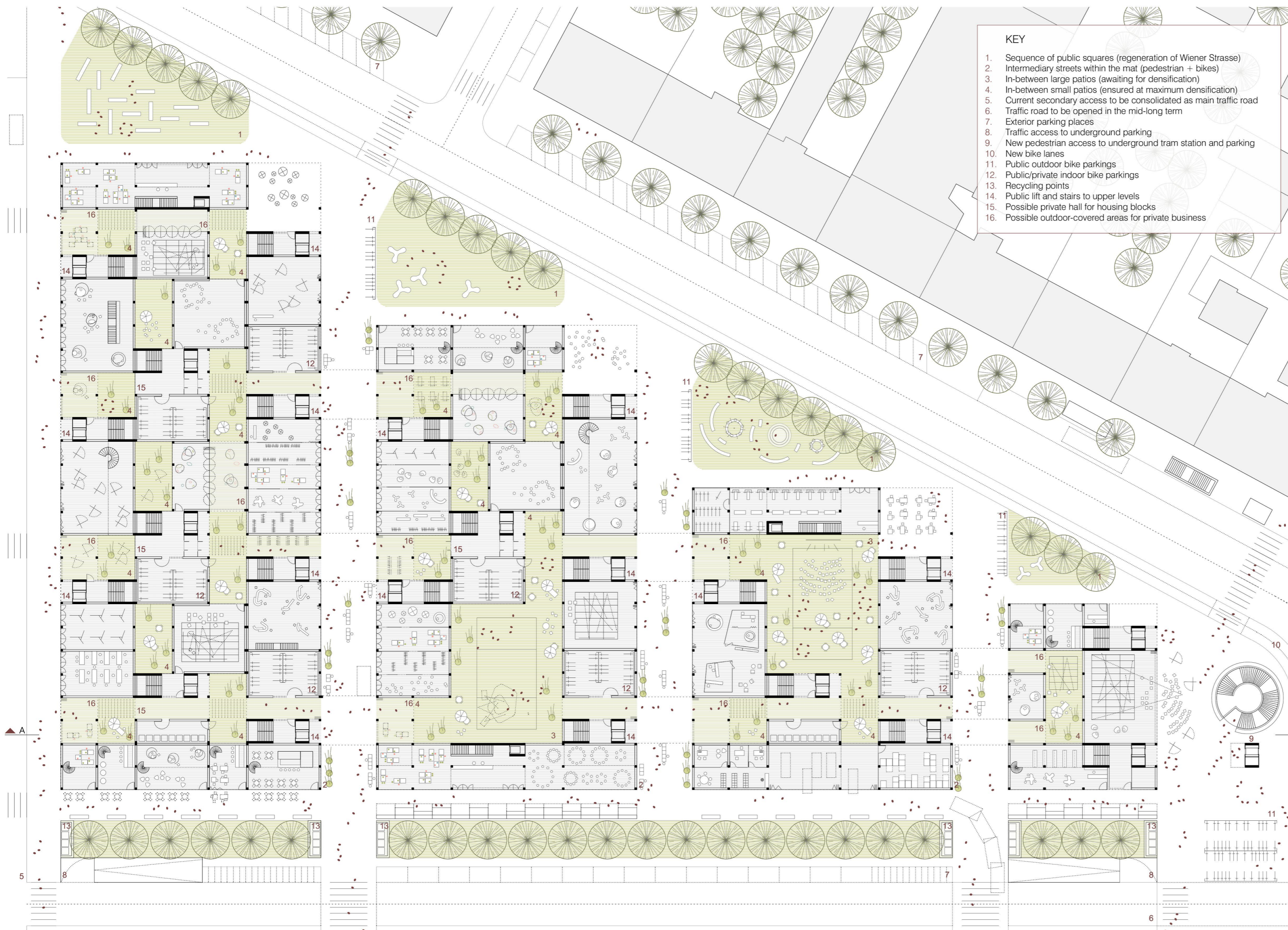
LJ575



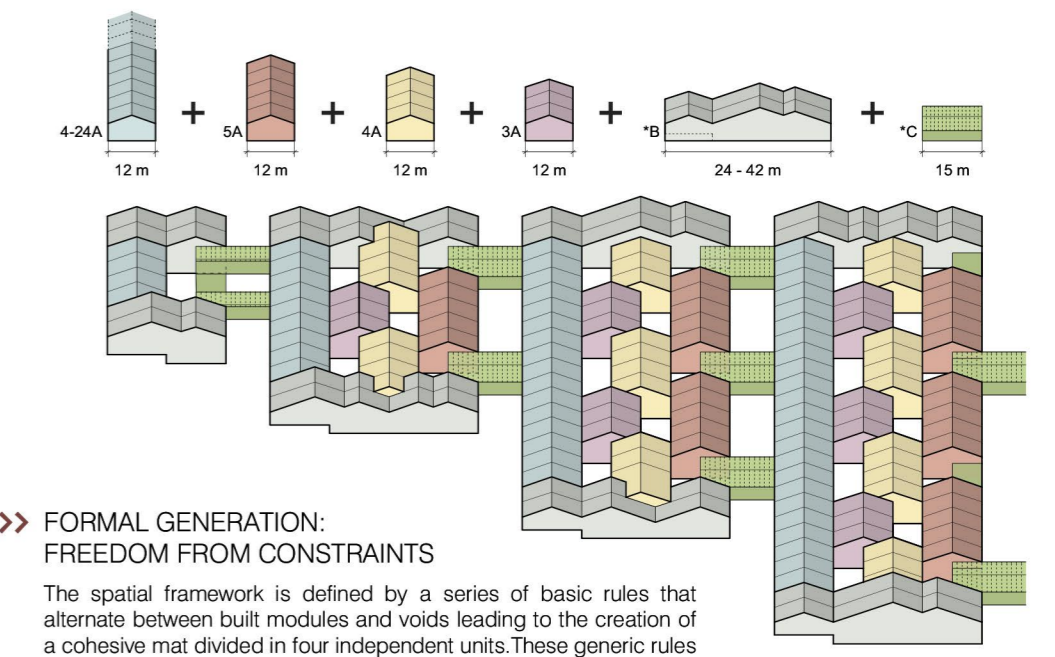
TOP FLOOR PLAN: HOUSING AND CO-WORKING - [1 : 500]



GENERAL SECTION AA' - [1 : 500]

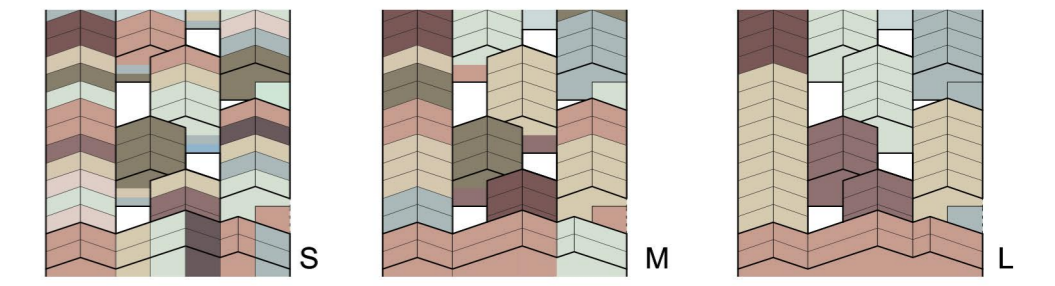


GROUND FLOOR PLAN: RETAIL AND PUBLIC SERVICES [1 : 500]



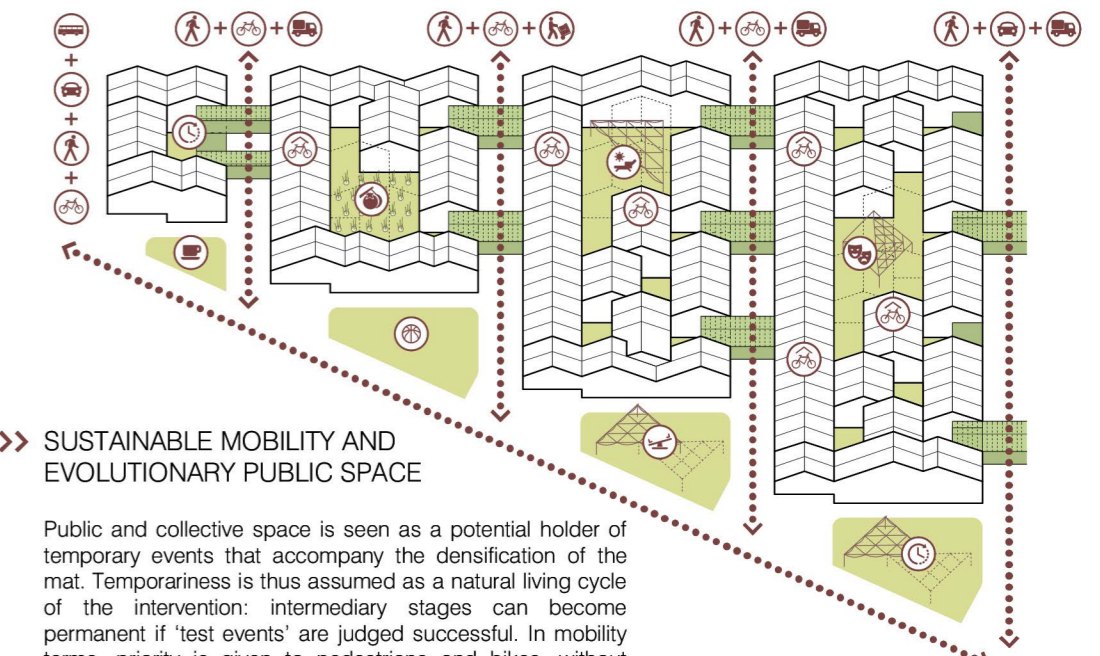
FORMAL GENERATION: FREEDOM FROM CONSTRAINTS

The spatial framework is defined by a series of basic rules that alternate between built modules and voids leading to the creation of a cohesive mat divided in four independent units. These generic rules are adapted to the geometry of the site, accepting singular elements for the edges and special connectors for the intermediary streets.



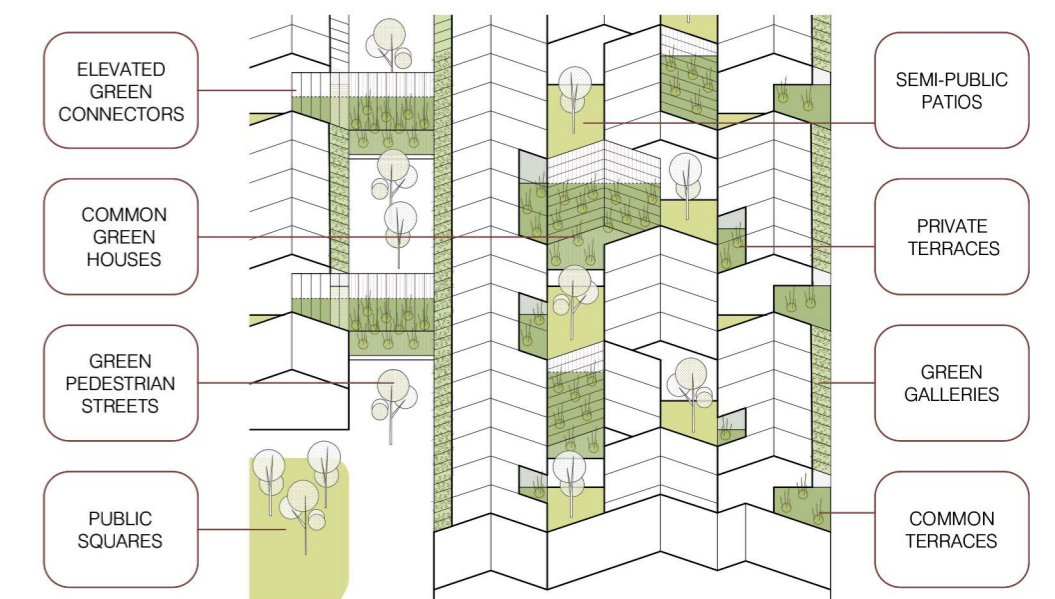
VARIABILITY IN PROGRAM FRAGMENTATION

Thanks to the modular rules and to the strategic location of common stairways, elevated galleries and connections between patios, the spatial system can easily vary its degree of fragmentation, absorbing productive realities of different nature and dimensions.



SUSTAINABLE MOBILITY AND EVOLUTIONARY PUBLIC SPACE

Public and collective space is seen as a potential holder of temporary events that accompany the densification of the mat. Temporality is thus assumed as a natural living cycle of the intervention: intermediary stages can become permanent if "test events" are judged successful. In mobility terms, priority is given to pedestrians and bikes, without forgetting loading/unloading requirements.

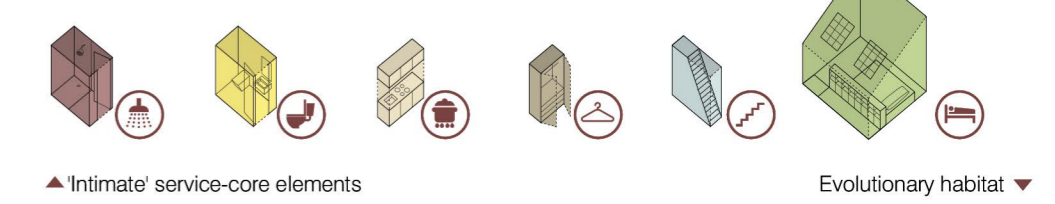


SUCCESSIVE SCALES IN CONNECTIVE GREEN SPACES

The green plays a major role in providing a refreshed positive image to the new industrial hub. At each successive scale, it acquires a different character and level of intimacy. Still, it always preserves its connecting role, both in physical and social terms.



Top floor plan - 'housing' [1 : 250]



SOFT LIMITS BETWEEN LIVING AND WORKING

In the productive mat, the limit between living and working is remarkably blurred. Our proposed typologies admit the creation of small studios, middle-size flats, co-working hostels etc. In all of them, common areas for team work and social exchange play a major role, both indoors and outdoors. Thanks to a very compact "intimate" service-core under the pitched roof, the rest of common semi-private and semi-public activities can be developed around it with a high degree of freedom and interconnection.

