



Ground floor plan of the project site // scale 1:500

development of the project site

The development of the Agora as the new centrepiece of *Industrial City Liesing* will be realised in different phases. Special emphasis will be placed on social interaction from day one. While the buildings on plots A and B are being constructed, the vacancy in the existing industrial hall will be used to establish low investment structures, which offer space for cafés, bakeries, snack bars and even a meeting place for the construction workers. As a consequence, a much-frequented intermediate area is emerging on plot B together with the opposite ground-level zone and the *pilot-building*.

The second phase of construction will concentrate on creating multi-purpose workspaces for various industries of different size. The three smaller buildings on plot A and C will offer shared workspaces for micro-businesses and start-ups as well as industrial workshops for small to medium-sized companies. Following this, a huge multi-storey hall is built to provide space for larger businesses such as logistic companies. Open spaces on plots A and C are reserved for cargo purposes such as loading, unloading and temporary storage.

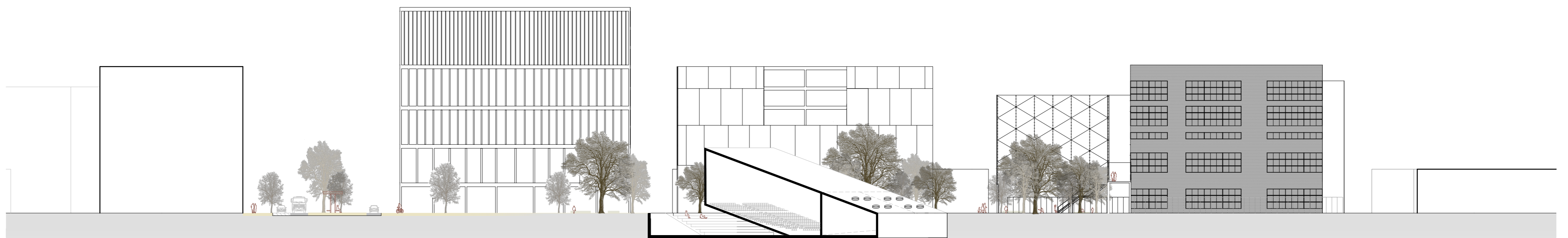
Plot D complements the mixture of different work-scapes with more classical office structures. Again, the progressive provision of space will pave the way for businesses of varying size to "set up shop". The 3rd phase terminates the construction of the framing structures defining the Agora. By subsequently removing the existing industrial hall in the centre (phase 4), a well-composed open space is created. At this stage the square is subdivided into four areas with different established uses:

1. A bustling public area,
2. An urban open space including the auditory,
3. A park-like area offering space for rest and recreation,
4. Commercial and industrial zones including storage and cargo areas.

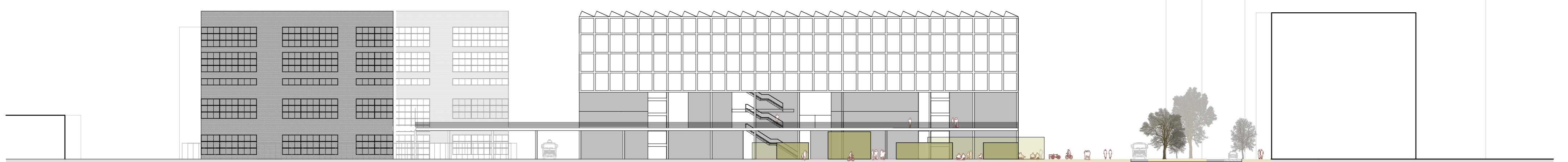


Main entrances and access roads

Building use



Section 04 // scale 1:500



Section 05 // scale 1:500