

RUNNER-UP/ LINZ/

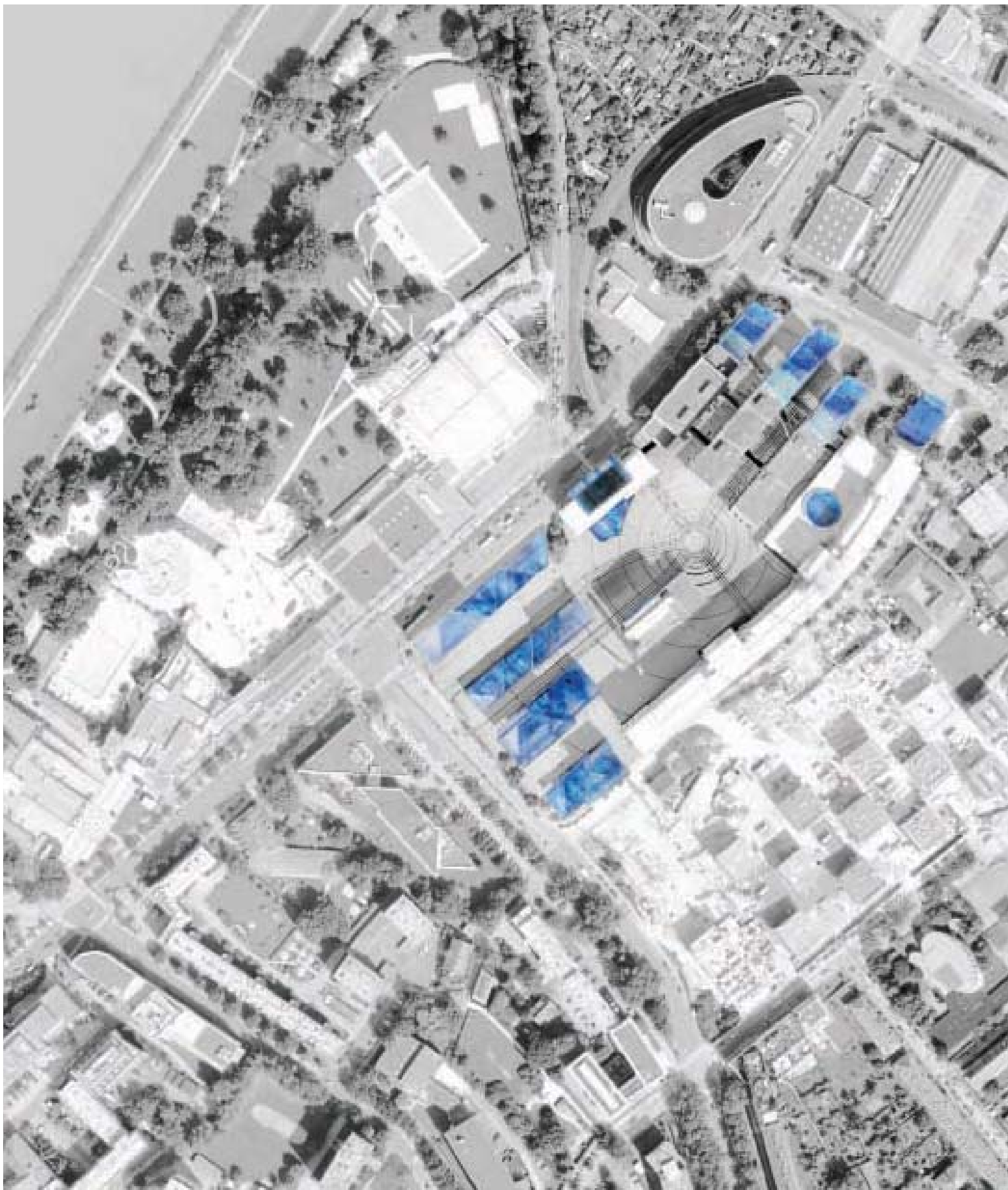
LINZERTUS GUTIÉRREZ-DELAFUENTE ARQUITECTOS

TEAM MEMBERS Julio de la Fuente (ES), Natalia Gutiérrez (ES)
PROJECT COLLABORATOR Paul-Rouven Denz (DE)

BASED IN Madrid, Spain
WEB www.gutierrez-delafuente.com
E-MAIL julio@gutierrez-delafuente.com

“
gutiérrez-delafuente arquitectos was founded in 2006 in Madrid by Natalia Gutiérrez and Julio de la Fuente. The office focuses its research activity on contemporary urban mutation processes such as the reconversion of abandoned industrial areas, or the phenomenon of shrinking cities. Also, they are especially interested in the new ways of living and housing developments. At present they are building singular projects in Spain and Germany, highlighting the Selb E9 implementation.”





“Insertus” (Latin): fragment of live flesh which is implanted in any part of the human body to repair an injury.

“Linzertus” (European 11): urban regeneration therapy composed of several programmatic blue implants in order to activate the Tabakfabrik historical buildings to create a new life cycle in the neighbourhood. This precision healing therapy will be done over time, through a step-by-step implementation.

Linzertus is a regeneration and programmatic conversion of the industrial area of Tabakfabrik, designed by Peter Behrens and Alexander Popp in 1929–1935.

The proposed urban structure tries to link several pieces of city around the site and to open Tabakfabrik to the city. A strong “social layer” on the ground floor is created.

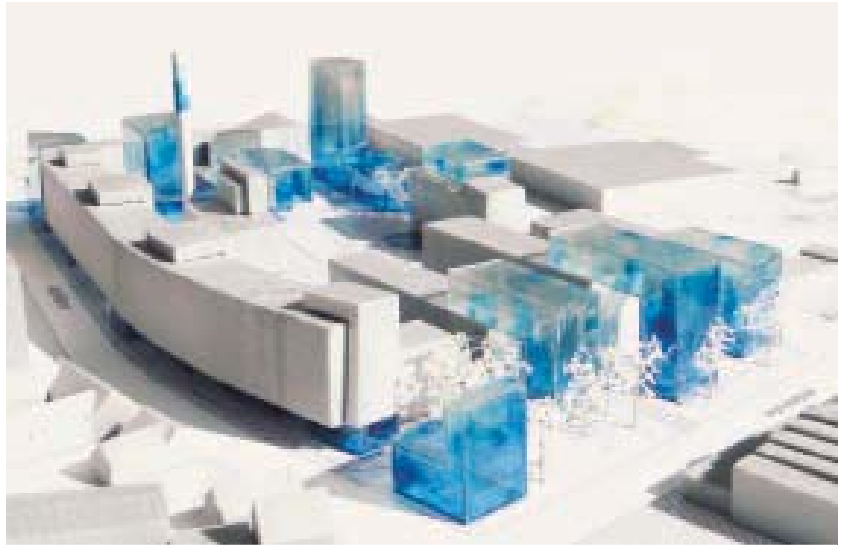
A strategy of potentials and opportunities takes advantage of the urban vectors, of the economical and psychogeographical status and also, of the existing spatial conditions for creating a programmatic atmosphere.

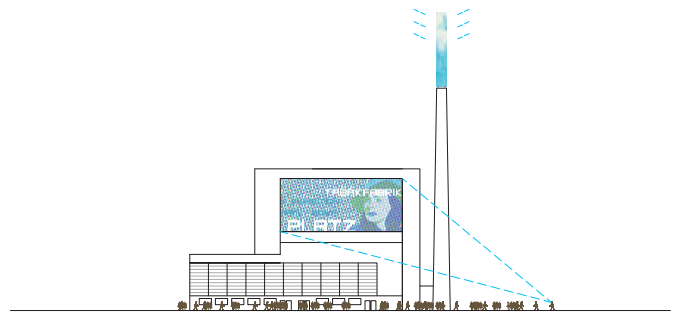
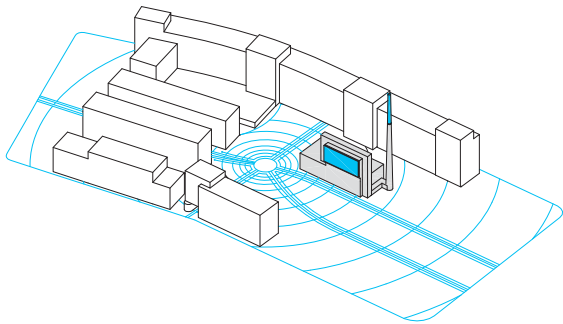
Due to the socio-economical change in the area and the location, a mixed use programme is proposed to create a complete life cycle. The Tabakfabrik Platz is designed as a new centrality with the sculptural power plant and chimney as a backdrop. The chimney is vertically extended to create a new eco-blue-landmark which dialogues in terms of energy with the past and the future. Sustainability as visibility of energy.

For creating a local and strong identity, the Tabakfabrik and local colour, Linzer Blue, is used to cohere the complex (local hybridation).

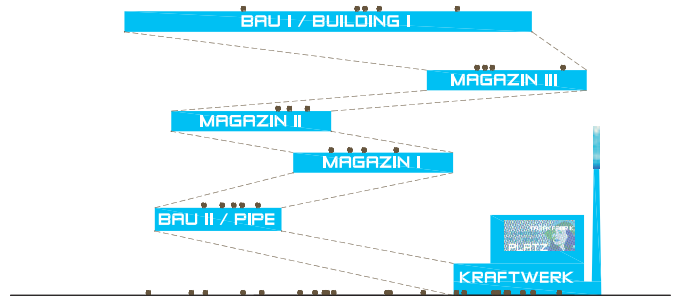
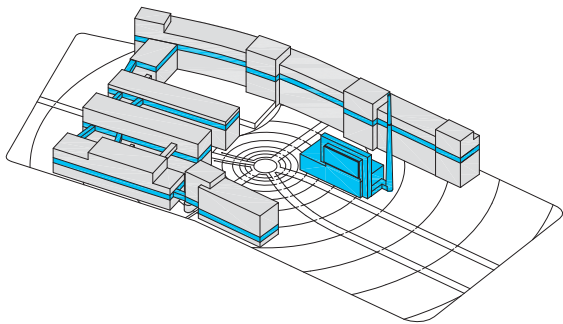
Ground level



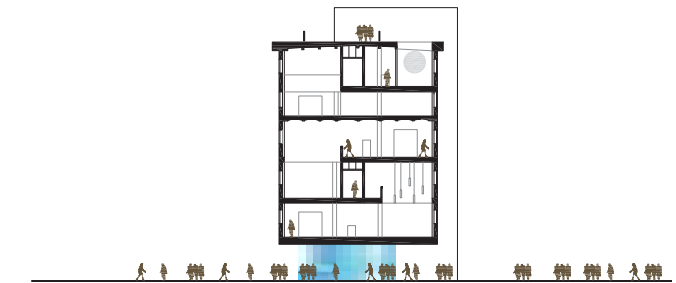
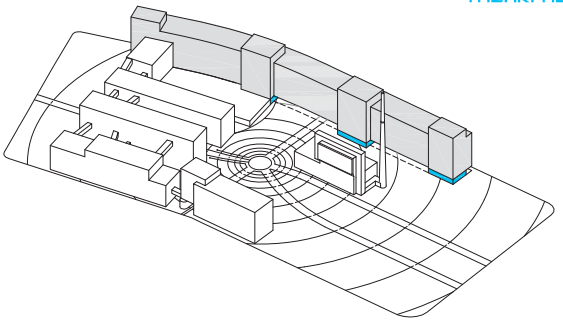




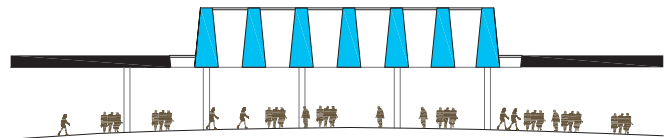
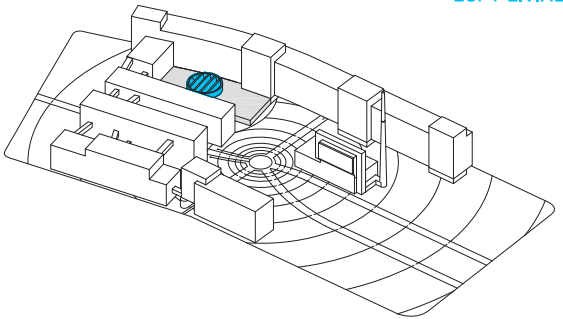
01. PHASE
POWER PLANT & NEW URBAN PUBLIC SPACE



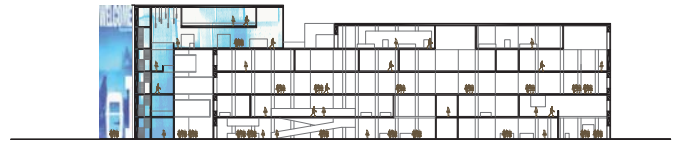
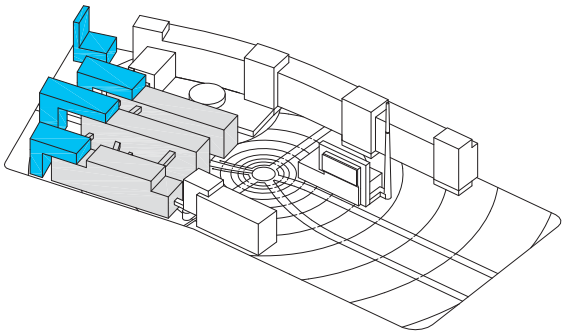
02. PHASE
TABAKFABRIK "3D PROMENADE" MUSEUM



03. PHASE
LOFT LIVING SPACES IN BAU I / BUILDING I

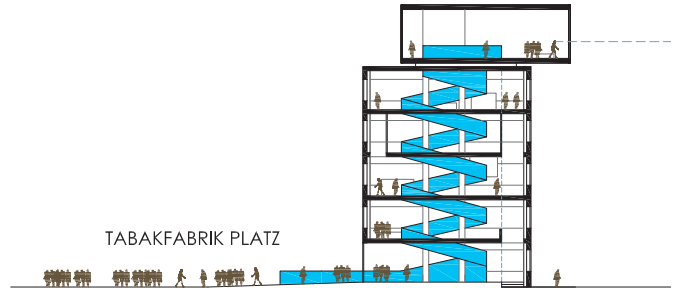
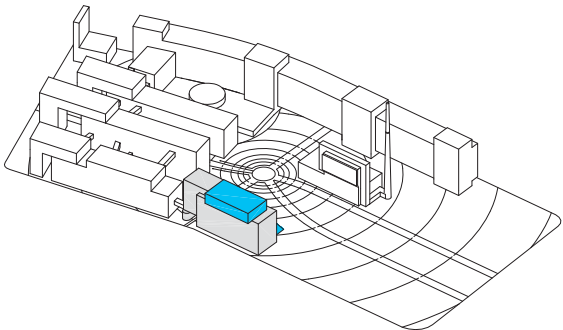


04. PHASE
MULTIPURPOSE & COVERED PUBLIC SPACE IN LOSÉHALLE



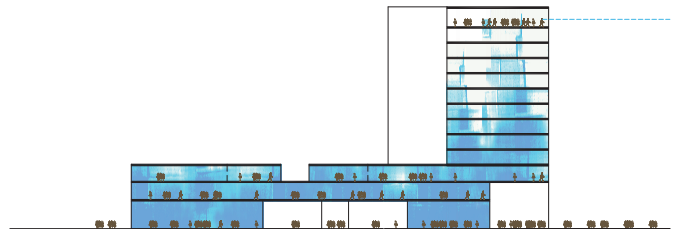
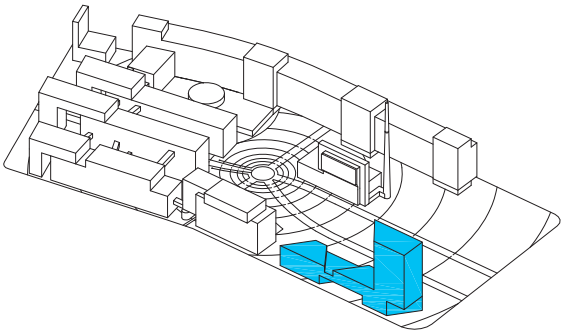
05. PHASE

WORKSHOP & LOFT ATELIER IN STORE ROOMS I, II, III



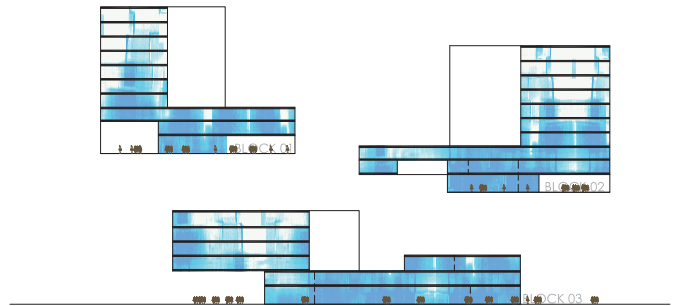
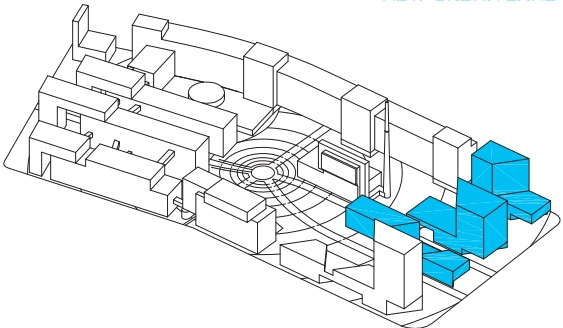
06. PHASE

SOCIAL FACILITIES IN PIPE TOBACCO FACTORY



07. PHASE

NEW URBAN LANDMARK / HOTEL & CONVENTION CENTER

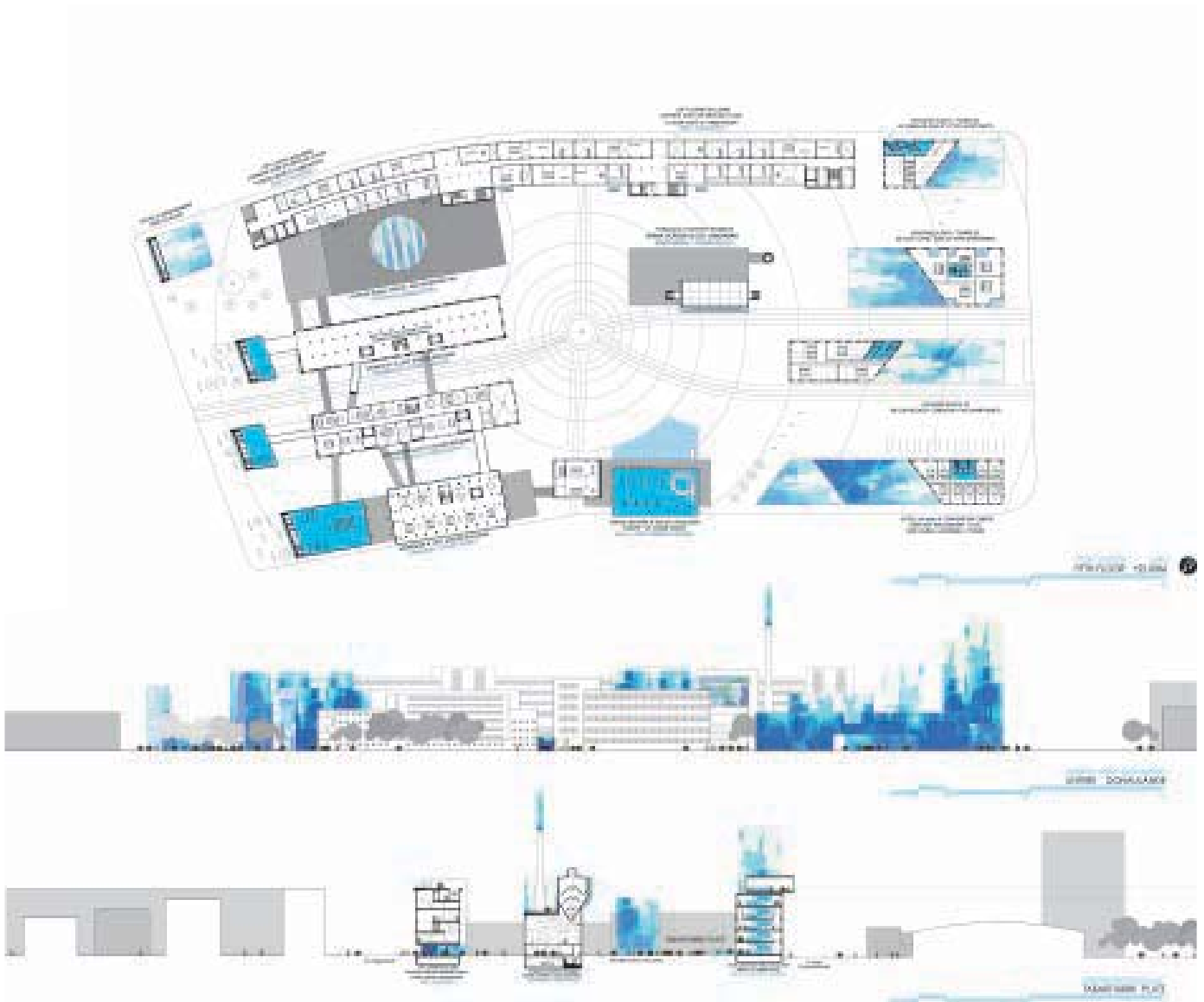


08. PHASE

3 BLOCKS & SOCLE-TOWER HOUSING TYPES



“The project suggests a convincing strategy of a series of precise interventions in different areas, which could give a valuable catalogue of transformation to the city. There is a certain ambiguity between openness and closeness: the project seems to be inclusive and exclusive at the same time. The play with the angles on the ground floor area suggests attractive and surprising links between the site and its surroundings.”



02. PHASE
Tabakfabrik "3D Promenade" Museum



03. PHASE
Loft living spaces in Building 1



04. PHASE
Multipurpose covered public space in Lösehalle



05. PHASE
Social facilities in Pipe Tobacco Factory

