

## curating

strategy for transformation

### The city of Graz is curating

The city of Graz is responsible for developing Kärntner Strasse and is curating the involvement of different stakeholders and uses. The framework of courtyards is defined by the administration of Graz. In addition to the spatial framework they have to orientate on the following basic rules.

A local **quarter management** facilitates the development of Kärntner Strasse and offers a **platform for stakeholders**.

Procedure: Potential developers have to address the administration of Graz. **Together** with the administration they search for a suitable plot and appropriate stakeholders. In an **evaluation** process they select the stakeholders and projects and create a roadmap for the development of the courtyards along Kärntnerstrasse.

#### courtyard mixture

The city of Graz has to consider a range of different stakeholders like private investors, cooperatives, and housing collectives.

It is also important to ensure a mixture of different uses like established companies, startups, craftsmen, offices, commercial use, cultural use and leisure facilities. So the emergence of synergies is facilitated by space which makes possible to meet up spontaneously, share work space and adapt to the current project requirements.

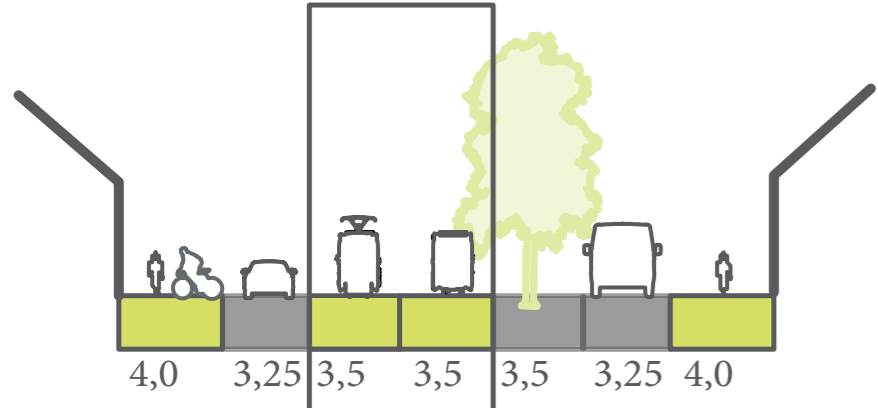
#### mixture in housing

Housing in the „second row“ also has to offer a special mixture of housing typologies.

For example: townhouses, multifloor apartment buildings, dense low buildings which offer different dwelling forms: student housing, cross-generational housing, single and family households. A percentage of 30 % private property, 40 % social housing, 30 % rental housing must be given.

### mobility channel

- \_saving connective function of Kärntnerstrasse (motorway <-> city centre)
- \_establishing sustainable public transport system in the middle of the street (bus -> tramway) as backbone ensuring resilience to future changes of the transport system
- \_developing public transport and pedestrian and reducing motorized individual traffic
- \_supporting soft mobility by wide pavements
- \_framing street space by buildings



### identity

- \_structuring Kärntnerstrasse by implementing "diamonds"
- \_giving rhythm by using a variation of courtyards, different typologies and uses
- \_connecting first row (major meaning) and second row (local housing) to a characteristic Grätzel quarter by multifunctional bufferzone

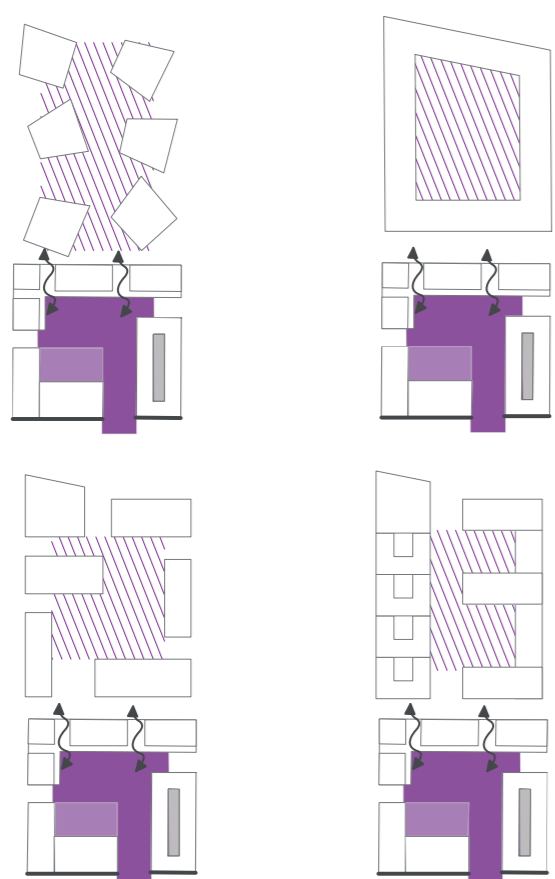
### diamonds

- \_implementing a stabile framework of public places
- \_locating diamonds on major crossroads
- \_diamonds need to be in public property
- \_hybrid building, ground floor: public uses, upper floors: services, special housing forms etc.

### transformation

- \_allowing a various range of developments in the second row
- \_saving collective space by creating shared gardens in the second row
- \_connecting courtyards at Kärntnerstrasse and blocks in the second row by connectors and creating a backyard network

### possibilities for second row



mobility point don bosco  
mobility school  
car/bike sharing  
parking

GRAZ CENTRE

community center  
st. johann bosco  
sports club sv don bosco  
kindergarden

Feldgasse -> Justizanstalt Graz- Karlau

multifunctional  
open space (greened)  
weekly market

Comrad-Kreuzer Gasse -> Puchstrasse

quarter management  
citizens administrative office  
repair cafe  
concerts

campus  
assembly hall  
open canteen  
seminar rooms  
homework tutors

Pirschäckergasse

Klusemannstrasse -> Klusemanngymnasium

Kapellenstrasse

Ulmgasse -> central cemetery

Grillweg -> NMS Graz Webling

Mur

Wagner- Jauregg  
park

mobility point  
mobility school  
car/bike sharing  
parking  
+ cultural use